





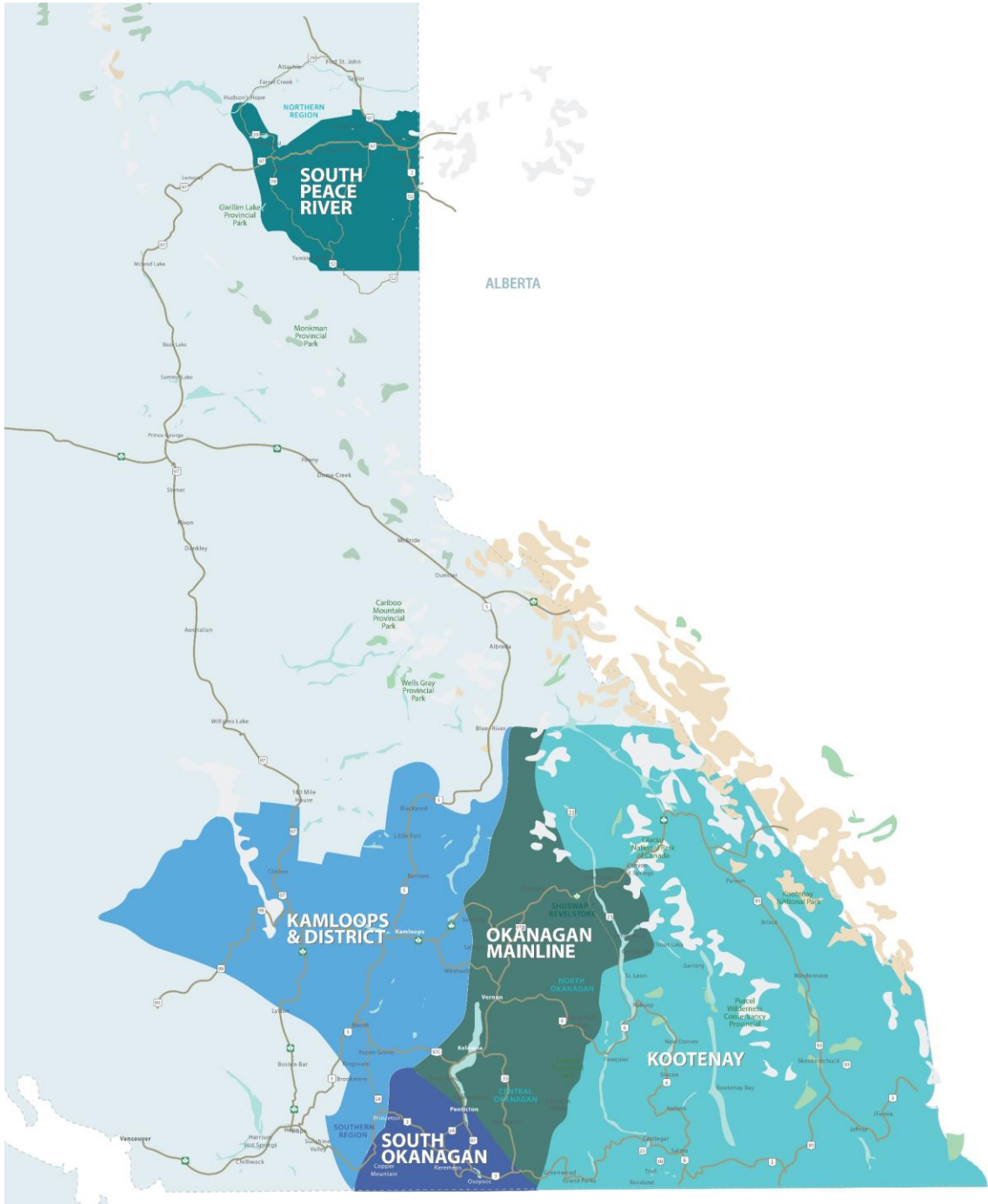


RESIDENTIAL SALES*
FEBRUARY 2022
SUMMARY STATISTICS

	 Units Sold	 Dollar Volume (Millions)	 Active Listings	 New Listings
CENTRAL OKANAGAN	559 ↓ -13.2%	\$531.6 ↑ 17.8%	727 ↓ -35.6%	690 ↓ -12.3%
NORTH OKANAGAN	150 ↓ -23.9%	\$109.6 ↓ -2.9%	306 ↓ -29.3%	230 ↓ -0.4%
SHUSWAP / REVELSTOKE	80 ↓ -15.8%	\$60.5 ↑ 14.8%	201 ↓ -18.0%	93 ↓ -14.7%
SOUTH OKANAGAN	161 ↓ -33.7%	\$110.8 ↓ -17.9%	358 ↓ -43.8%	125 ↓ -56.7%
SOUTH PEACE RIVER AREA	38 ↑ 31.0%	\$8.9 ↑ 16.3%	229 ↓ -25.9%	11 ↓ -76.1%
KAMLOOPS AND DISTRICT	287 ↓ -2.0%	\$197.6 ↑ 30.3%	790 ↑ 61.2%	362 ↑ 16.8%
KOOTENAY	241 ↓ -14.8%	\$115.6 ↓ -5.0%	657 ↓ -16.6%	339 ↑ 2.7%
TOTAL BOARD	1,516 ↓ -15.0%	\$1,134.7 ↑ 9.8%	3268 ↓ -18.9%	1850 ↓ -12.0%

Residential = Acreage, Duplex, Mobile Home, Recreational, Single Family, 3/4Plex, Apartment & Townhouse. Excludes Land

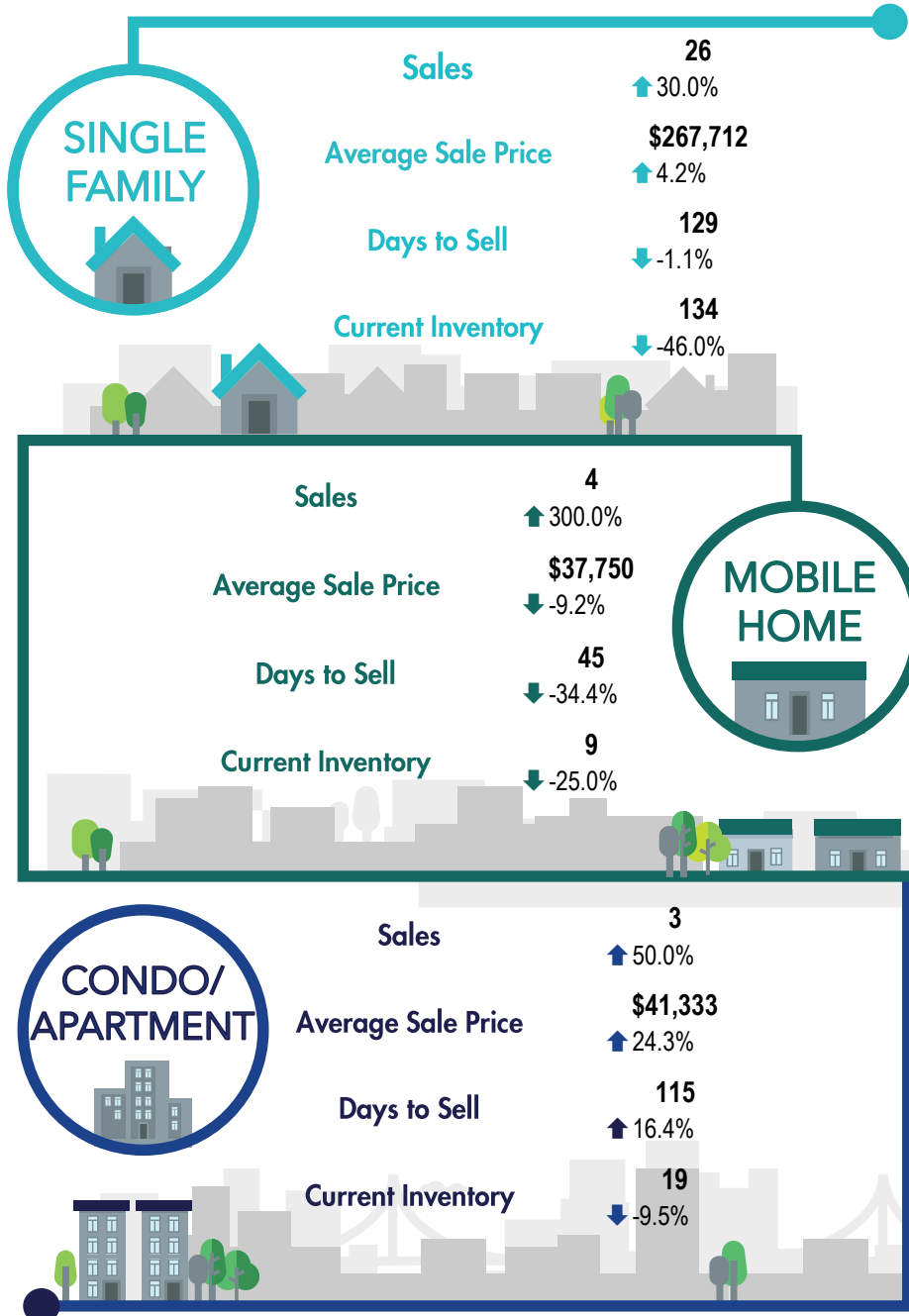
**Percentage indicate change from the same period last year



This map is for informational purposes. It does not represent an on-the-ground survey and represents only the approximate relative location of property boundaries.



SOUTH PEACE RIVER REGION



*Percentage indicate change from the same period last year