





RESIDENTIAL SALES* SEPTEMBER 2025 SUMMARY STATISTICS

				
	Units Sold	Dollar Volume (Millions)	Active Listings	New Listings
CENTRAL OKANAGAN	367 ↑ 39.5%	\$328.9 ↑ 62.8%	3,240 ↓ -1.2%	973 ↑ 8.7%
NORTH OKANAGAN	156 ↑ 51.5%	\$107.0 ↑ 34.3%	1,037 ↑ 3.2%	282 ↑ 31.2%
SHUSWAP / REVELSTOKE	87 ↑ 11.5%	\$59.1 ↑ 21.1%	685 ↓ -10.0%	150 ↑ 21.0%
SOUTH OKANAGAN	145 ↑ 27.2%	\$96.4 ↑ 44.9%	1,445 ↓ -5.0%	323 ↓ -1.5%
SOUTH PEACE RIVER AREA	32 ↓ -30.4%	\$9.9 ↓ -42.7%	215 ↓ -17.0%	39 ↓ -35.0%
KAMLOOPS AND DISTRICT	222 ↑ 23.3%	\$138.8 ↑ 26.8%	1,436 ↑ 9.7%	440 ↑ 5.0%
KOOTENAY	233 ↓ -13.7%	\$136.6 ↓ -12.4%	1,795 ↑ 2.6%	436 ↑ 18.8%
TOTAL ASSOCIATION	1,242 ↑ 17.8%	\$876.6 ↑ 29.0%	9,853 ↓ -0.3%	2,643 ↑ 9.8%

Residential = Acreage, Duplex, Mobile Home, Recreational, SINGLE-FAMILY, 3/4Plex, Apartment & Townhouse. Excludes Land

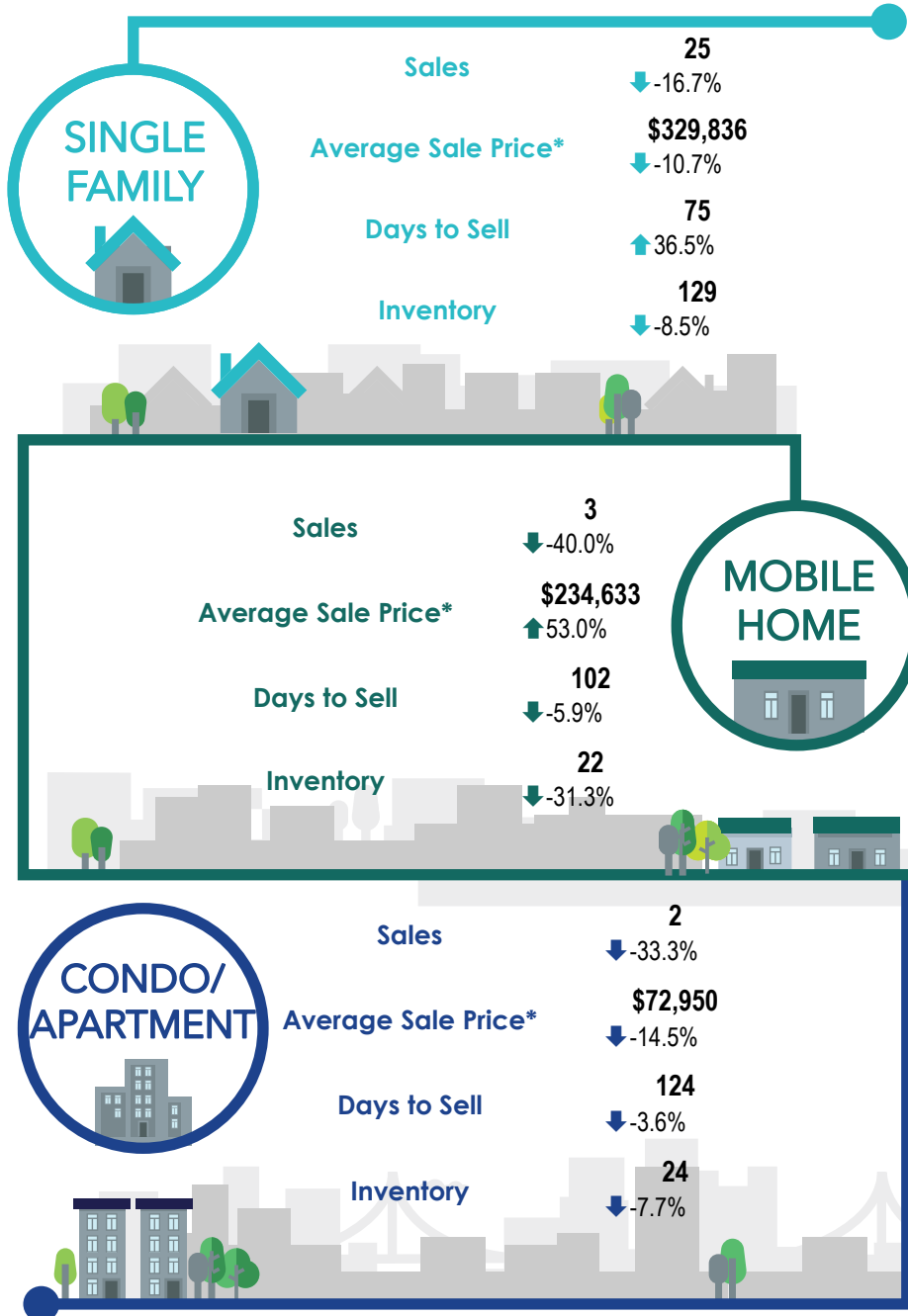
**Percentage indicates change from the same period last year



This map is for informational purposes. It does not represent an on-the-ground survey and represents only the approximate relative location of property boundaries.



SOUTH PEACE RIVER REGION



*The Association of Interior REALTORS® cautions that the average residential price is a useful figure only for establishing trends and comparisons over a period of time. It does not indicate an actual price for a home due to the wide selection of housing available over the vast geographic area.

**Percentages indicate changes from the same period last year.