



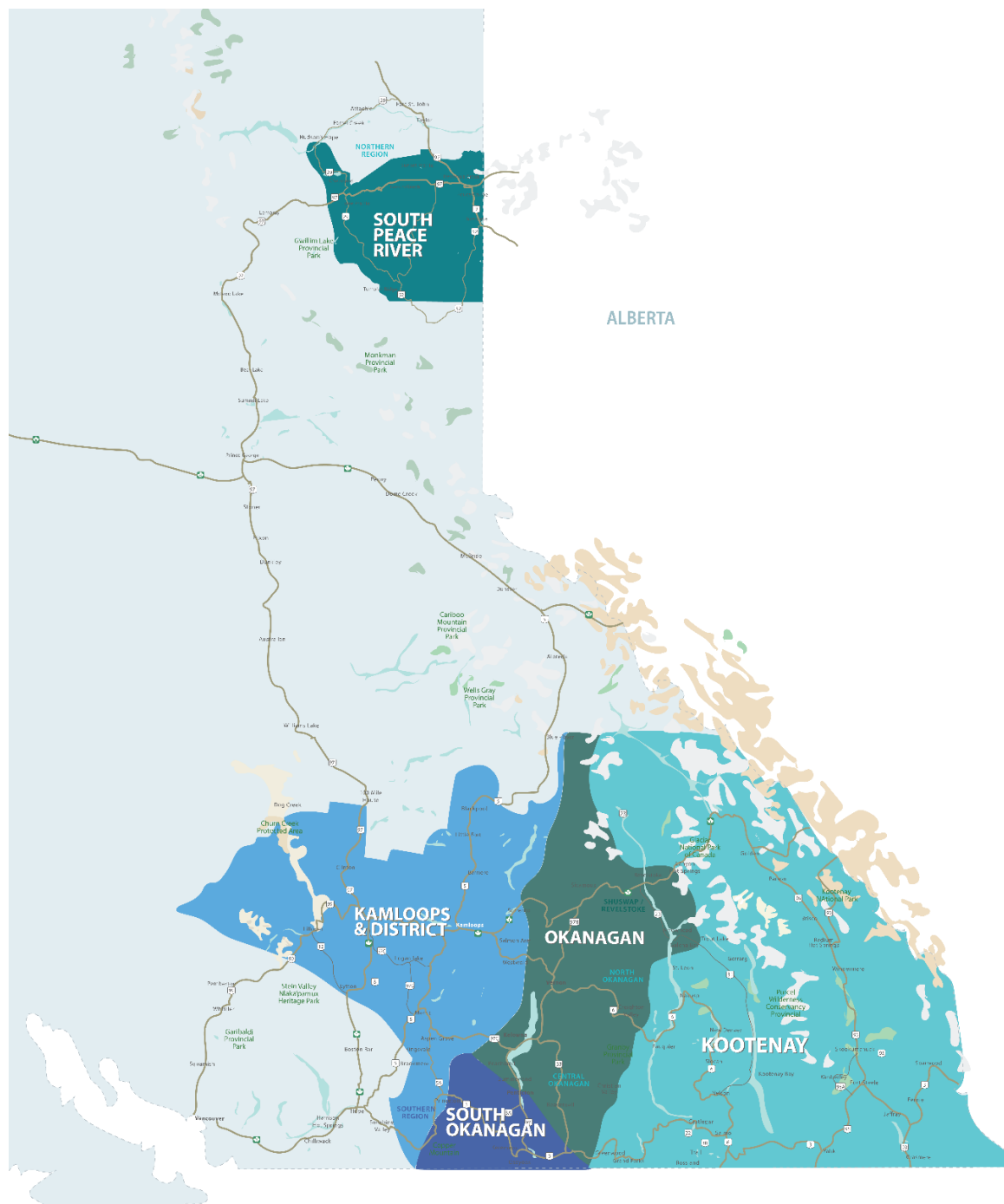


RESIDENTIAL SALES* OCTOBER 2022 SUMMARY STATISTICS

				
	Units Sold	Dollar Volume (Millions)	Active Listings	New Listings
CENTRAL OKANAGAN	303 ↓ -46.7%	\$252.5 ↓ -47.8%	2,070 ↑ 93.3%	755 ↑ 3.4%
NORTH OKANAGAN	124 ↓ -34.7%	\$83.2 ↓ -29.5%	631 ↑ 45.1%	213 ↓ -6.6%
SHUSWAP / REVELSTOKE	58 ↓ -43.7%	\$37.9 ↓ -43.7%	454 ↑ 65.1%	120 ↑ 25.0%
SOUTH OKANAGAN	133 ↓ -35.1%	\$77.5 ↓ -42.5%	804 ↑ 50.3%	128 ↓ -7.2%
SOUTH PEACE RIVER AREA	36 ↓ -23.4%	\$9.1 ↓ -26.4%	257 ↓ -19.4%	16 ↓ -20.0%
KAMLOOPS AND DISTRICT	144 ↓ -52.0%	\$84.3 ↓ -54.5%	2,025 ↑ 132.5%	320 ↓ -4.5%
KOOTENAY	203 ↓ -44.8%	\$94.3 ↓ -45.8%	1,209 ↑ 28.2%	257 ↓ -20.9%
TOTAL ASSOCIATION	1,001 ↓ -43.8%	\$638.8 ↓ -45.7%	7,450 ↑ 67.5%	1,689 ↓ -9.8%

*Residential = Acreage, Duplex, Mobile Home, Recreational, Single Family, 3/4Plex, Apartment & Townhouse. Excludes Land

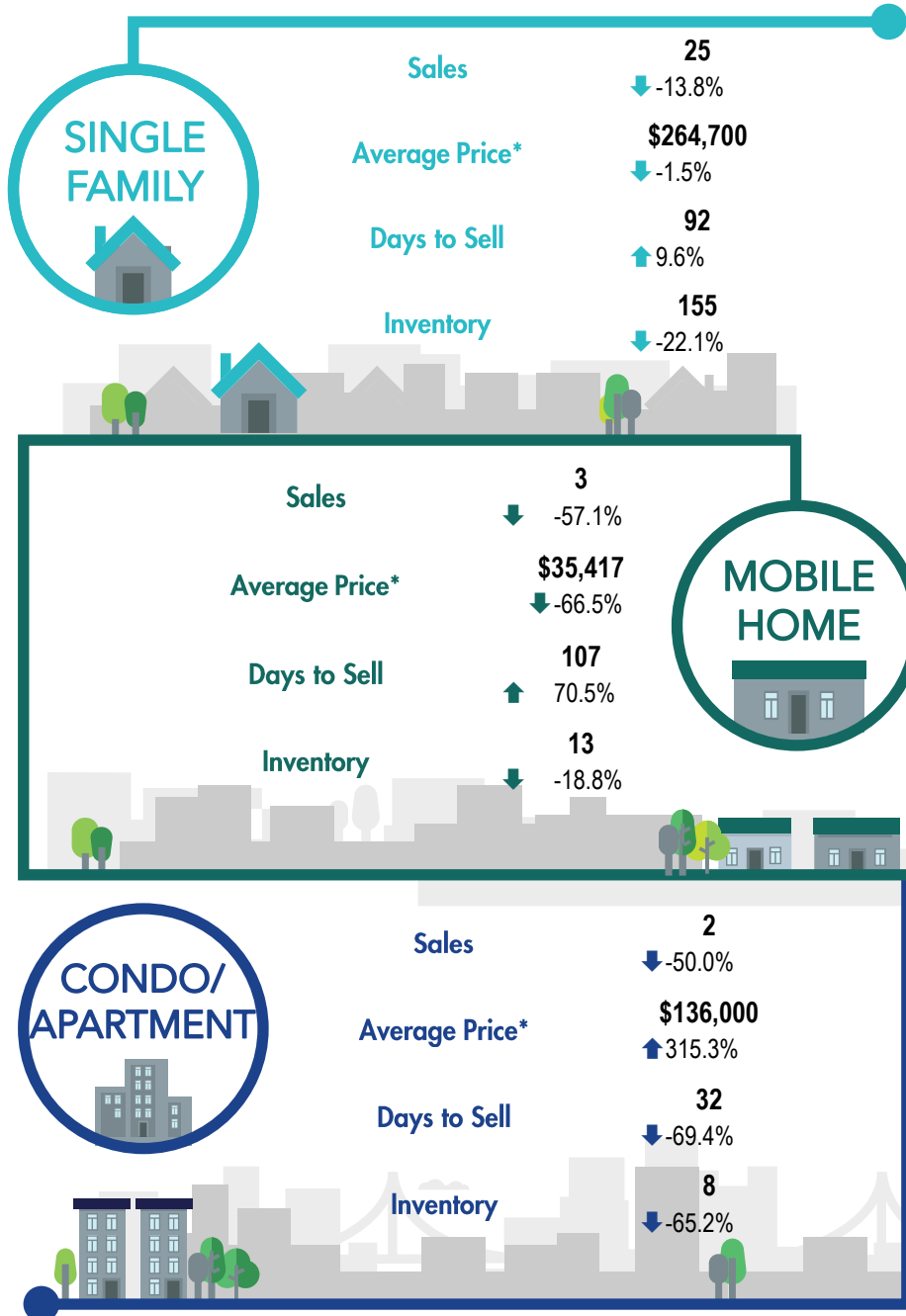
**Percentage indicate change from the same period last year



This map is for informational purposes. It does not represent an on-the-ground survey and represents only the approximate relative location of property boundaries.



SOUTH PEACE RIVER REGION



*The Association of Interior REALTORS® cautions that the average residential price is a useful figure only for establishing trends and comparisons over a period of time. It does not indicate an actual price for a home due to the wide selection of housing available over the vast geographic area.

**Percentage indicate change from the same period last year