





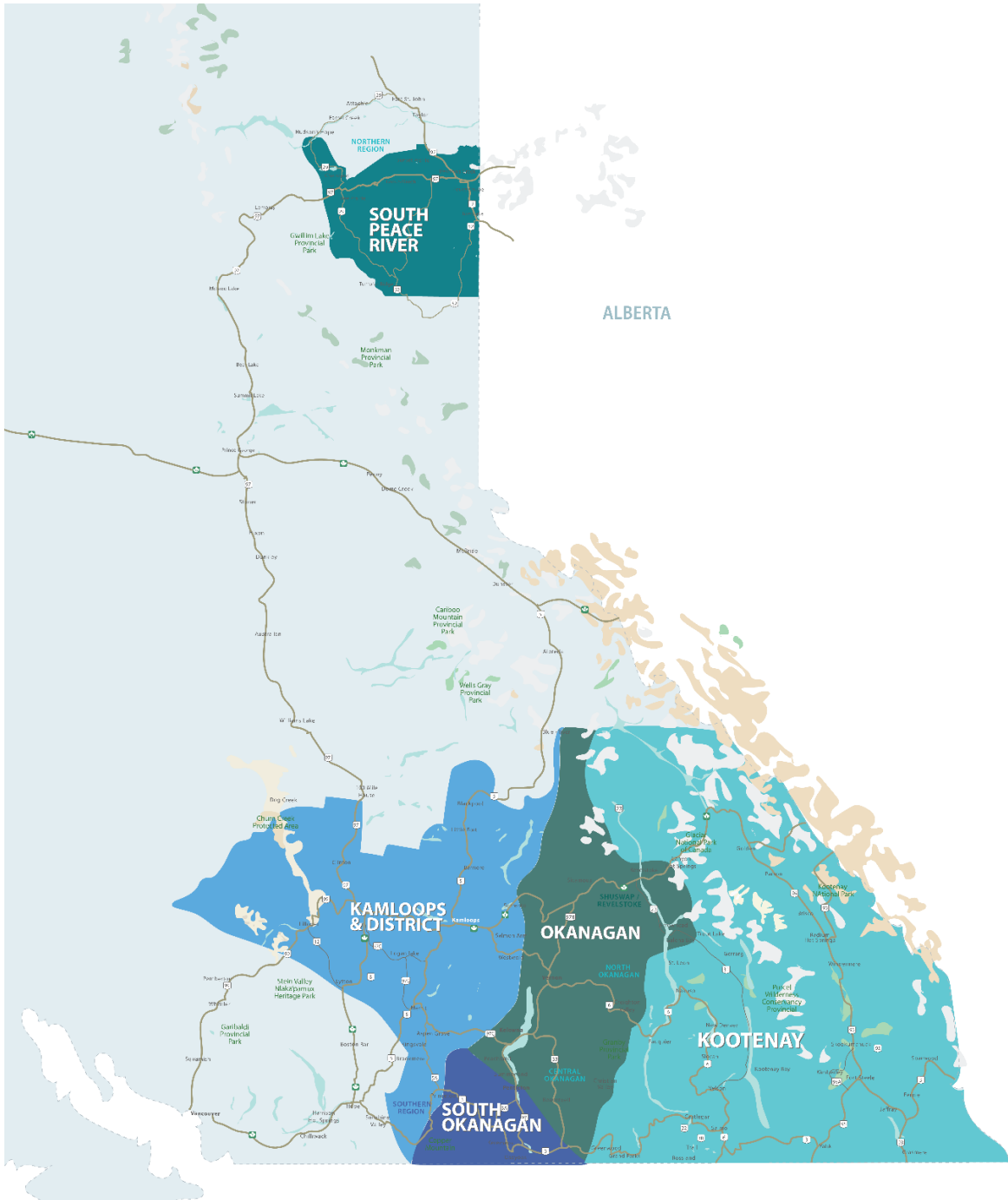


RESIDENTIAL SALES*
MAY 2022
SUMMARY STATISTICS

| |  |  |  |  |
|-------------------------------|---|---|---|---|
| | Units Sold | Dollar Volume (Millions) | Active Listings | New Listings |
| CENTRAL OKANAGAN | 554 ↓ -28.2% | \$474.3 ↓ -21.0% | 1,605 ↑ 29.1% | 1,178 ↑ 14.3% |
| NORTH OKANAGAN | 199 ↓ -24.9% | \$145.0 ↓ -17.8% | 524 ↑ 12.0% | 358 ↑ 19.7% |
| SHUSWAP / REVELSTOKE | 112 ↓ -11.8% | \$75.0 ↓ -4.7% | 436 ↑ 47.8% | 255 ↑ 59.4% |
| SOUTH OKANAGAN | 185 ↓ -29.4% | \$127.3 ↓ -27.1% | 690 ↑ 6.3% | 251 ↓ -29.9% |
| SOUTH PEACE RIVER AREA | 72 ↑ 53.2% | \$21.0 ↑ 68.8% | 222 ↓ -35.5% | 13 ↓ -86.7% |
| KAMLOOPS AND DISTRICT | 263 ↓ -33.6% | \$170.9 ↓ -21.5% | 1,399 ↑ 106.6% | 553 ↑ 9.7% |
| KOOTENAY | 302 ↓ -19.9% | \$154.3 ↓ -11.1% | 1,067 ↑ 6.3% | 558 ↑ 0.7% |
| TOTAL ASSOCIATION | 1,687 ↓ -24.9% | \$1,167.7 ↓ -18.6% | 5,943 ↑ 27.0% | 3,166 ↑ 5.4% |

Residential = Acreage, Duplex, Mobile Home, Recreational, Single Family, 3/4Plex, Apartment & Townhouse. Excludes Land

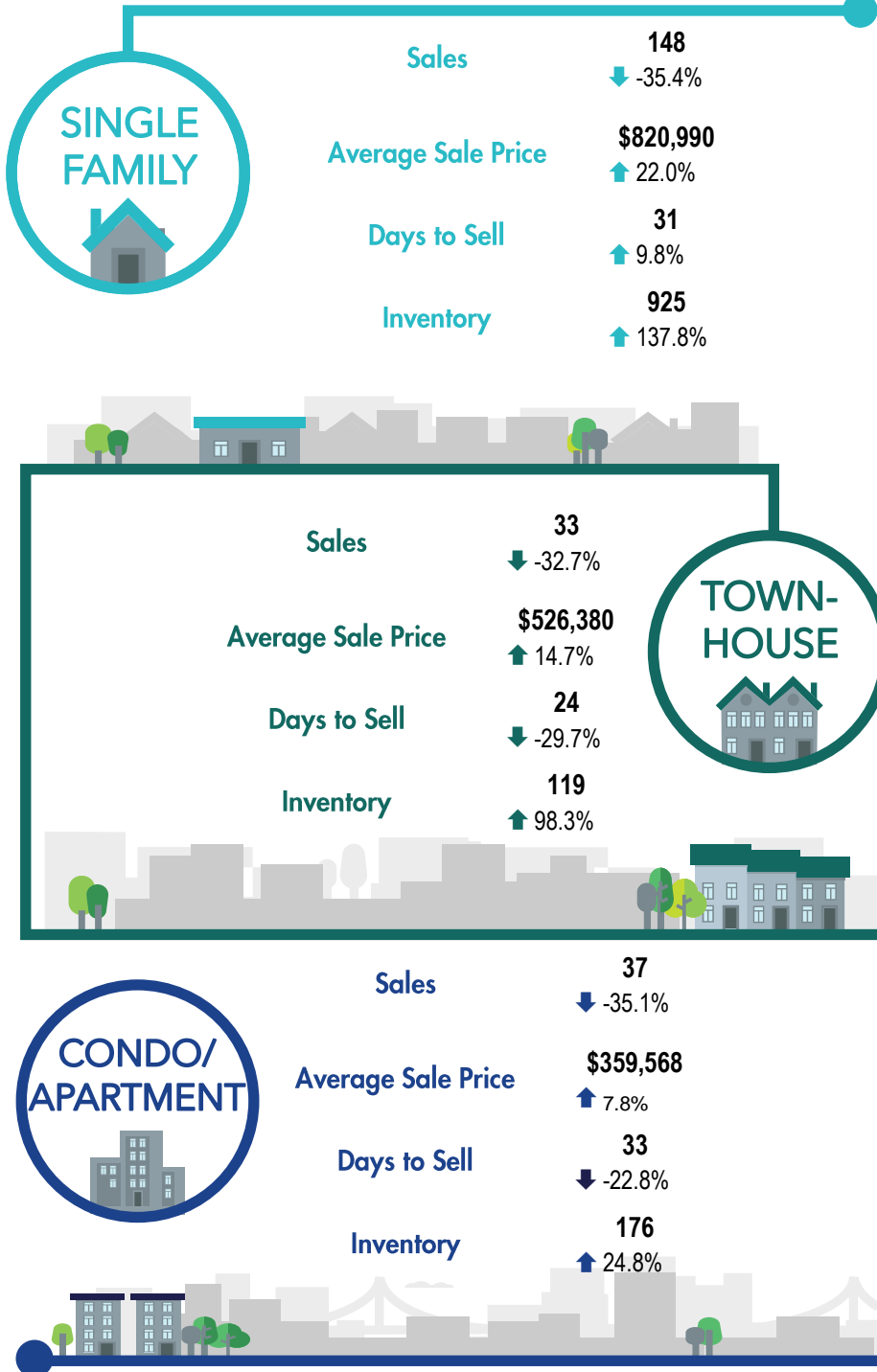
**Percentage indicate change from the same period last year



This map is for informational purposes. It does not represent an on-the-ground survey and represents only the approximate relative location of property boundaries.



KAMLOOPS AND DISTRICT REGION



*Benchmark Price estimates for the Kamloops and District region is currently not available due to data transition.