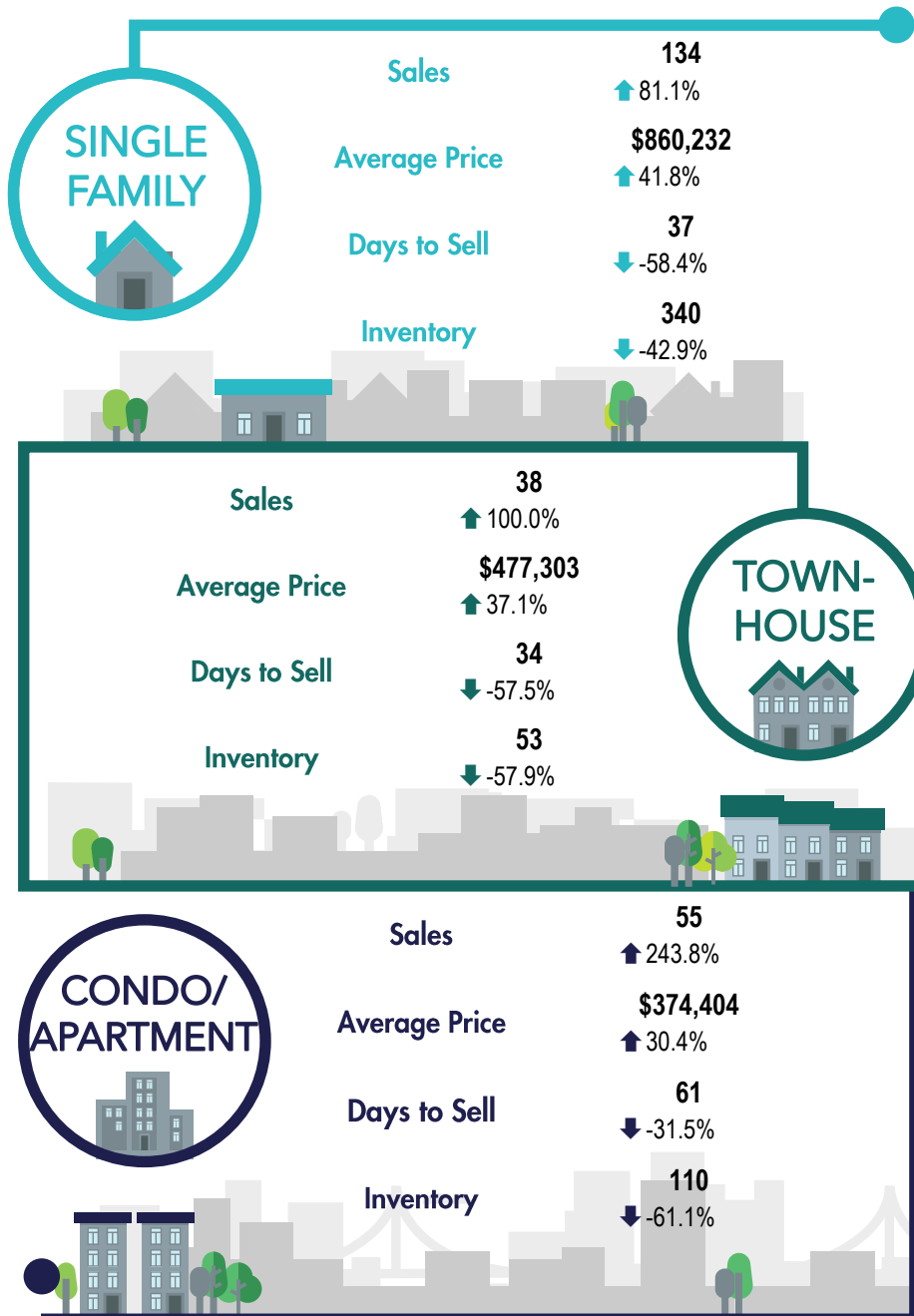


*The Benchmark Price is a better representation of value compared to the average or medium price, as it represents a dwelling with "typical attributes" to those traded in the area. Averages can be misleading due to atypical transactions.

***Percentage indicate change from the same period last year



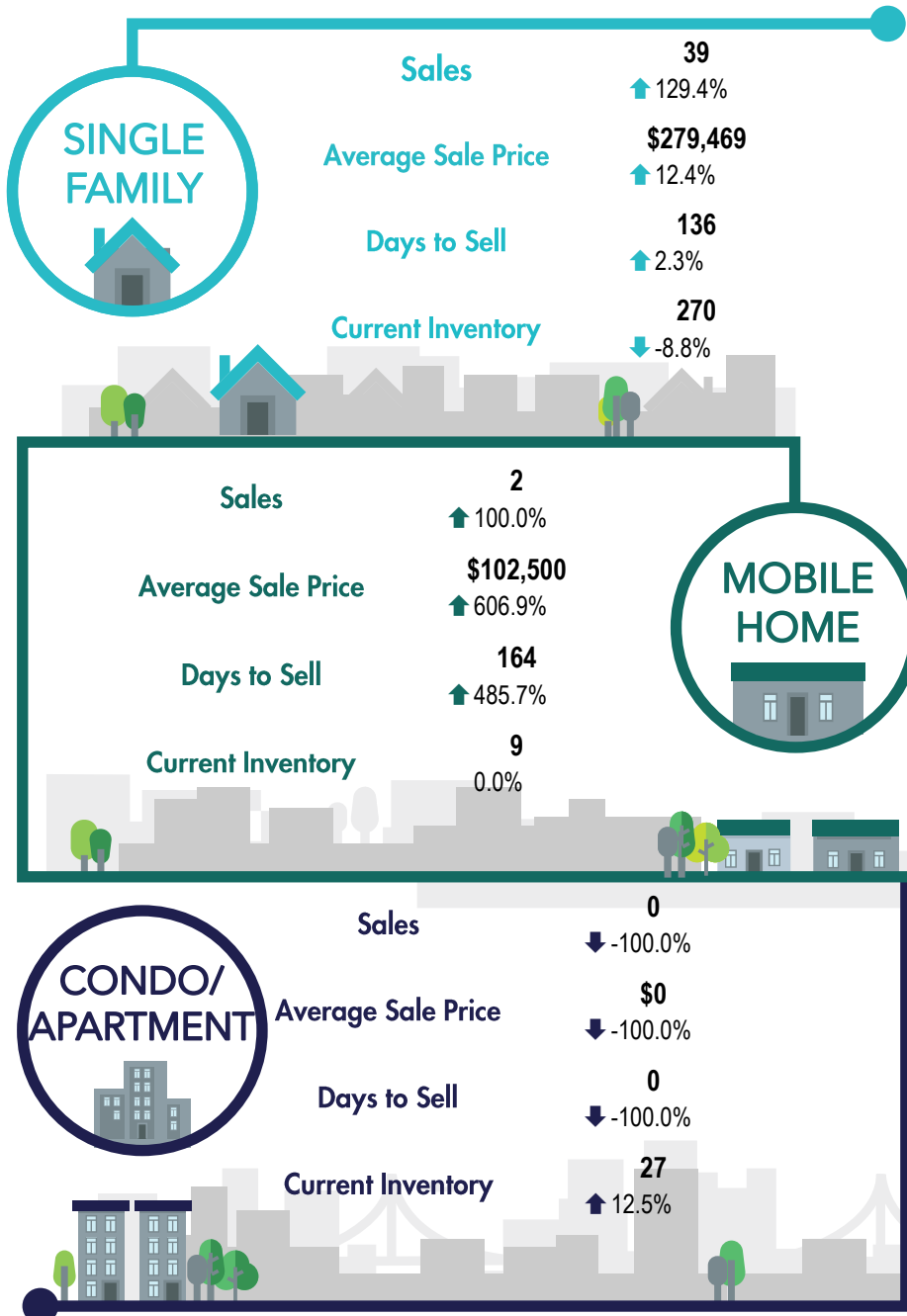
SOUTH OKANAGAN REGION



*Percentage indicate change from the same period last year



SOUTH PEACE RIVER REGION



*Percentage indicate change from the same period last year