





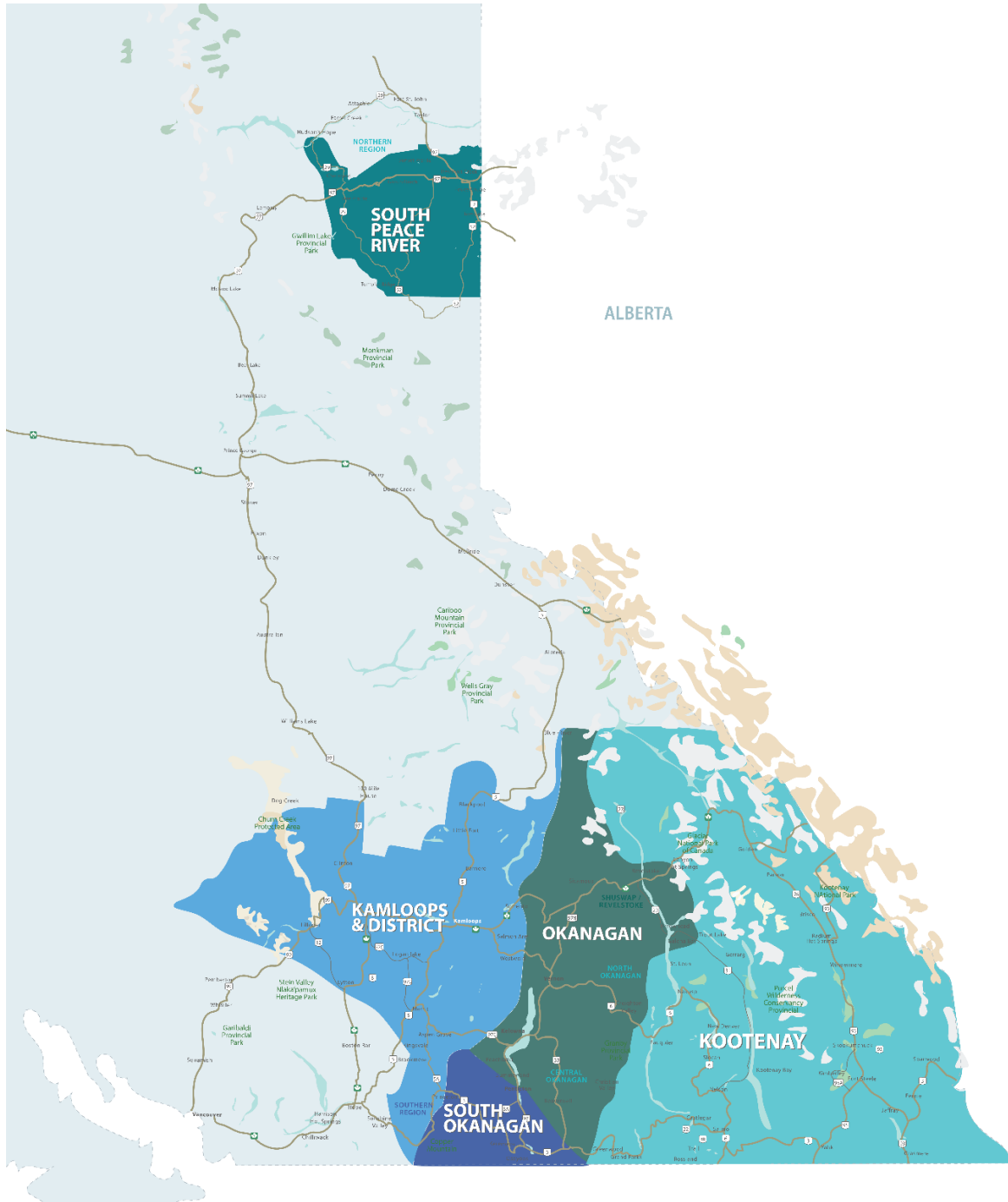


RESIDENTIAL SALES*
MARCH 2023
SUMMARY STATISTICS

	 Units Sold	 Dollar Volume (Millions)	 Active Listings	 New Listings
CENTRAL OKANAGAN	421 ↓ -34.1%	\$346.1 ↓ -43.1%	1,929 ↑ 76.0%	954 ↓ -18.0%
NORTH OKANAGAN	131 ↓ -45.9%	\$89.7 ↓ -50.1%	676 ↑ 73.8%	304 ↓ -9.3%
SHUSWAP / REVELSTOKE	78 ↓ -11.4%	\$52.1 ↓ -11.4%	380 ↑ 47.9%	165 ↑ 5.8%
SOUTH OKANAGAN	149 ↓ -32.3%	\$96.6 ↓ -29.1%	811 ↑ 81.0%	210 0.0%
SOUTH PEACE RIVER AREA	26 ↓ -58.1%	\$7.1 ↓ -55.7%	214 ↓ -4.5%	15 ↓ -31.8%
KAMLOOPS AND DISTRICT	213 ↓ -36.8%	\$123.9 ↓ -44.3%	858 ↑ 76.2%	391 ↓ -24.2%
KOOTENAY	189 ↓ -43.4%	\$90.7 ↓ -48.3%	1,035 ↑ 35.6%	403 ↓ -18.4%
TOTAL ASSOCIATION	1,207 ↓ -37.2%	\$806.2 ↓ -42.3%	5,903 ↑ 61.1%	2,442 ↓ -15.7%

*Residential = Acreage, Duplex, Mobile Home, Recreational, Single Family, 3/4Plex, Apartment & Townhouse. Excludes Land

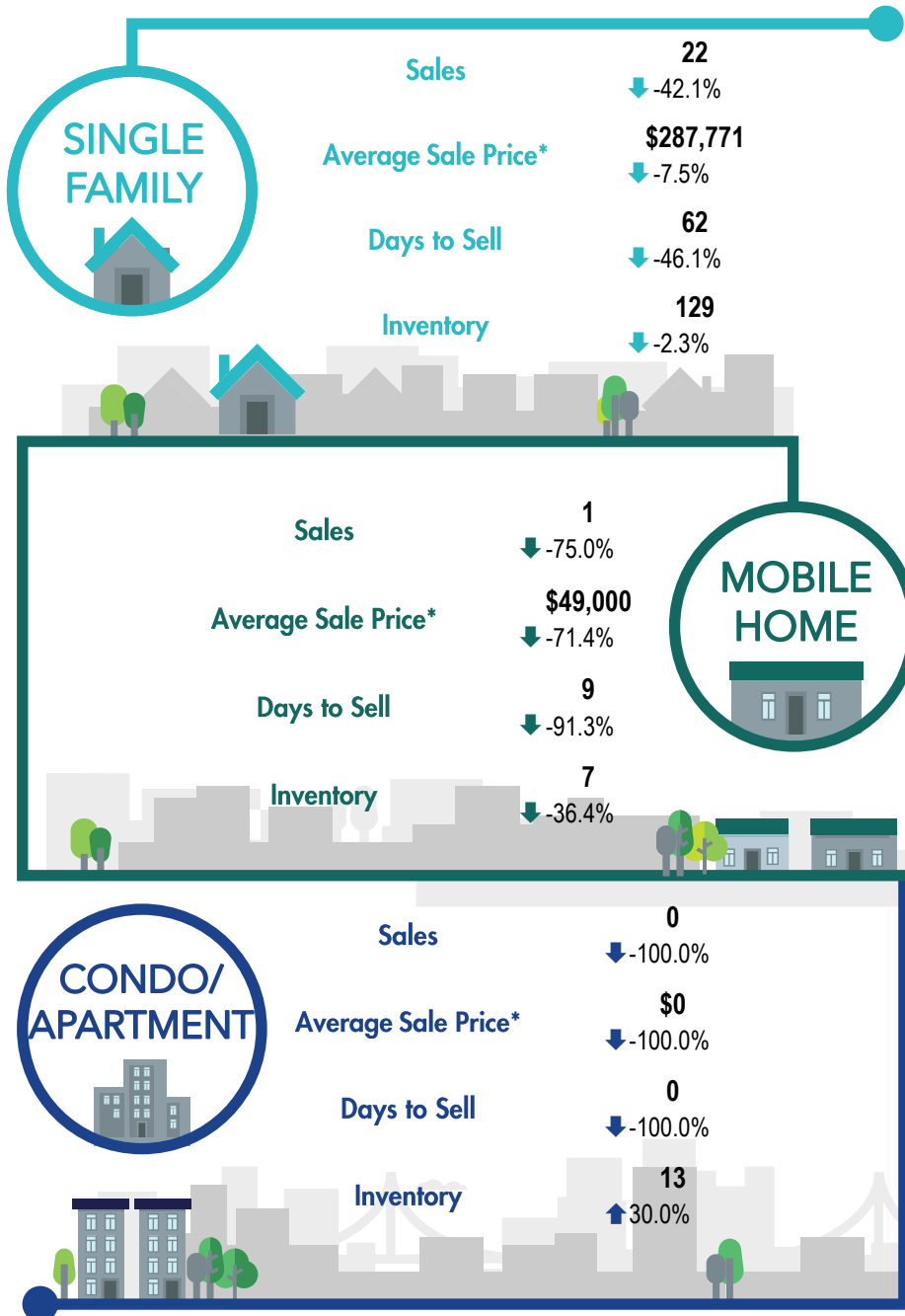
**Percentage indicates change from the same period last year



This map is for informational purposes. It does not represent an on-the-ground survey and represents only the approximate relative location of property boundaries.



SOUTH PEACE RIVER REGION



*The Association of Interior REALTORS® cautions that the average residential price is a useful figure only for establishing trends and comparisons over a period of time. It does not indicate an actual price for a home due to the wide selection of housing available over the vast geographic area.

**Percentage indicate change from the same period last year