





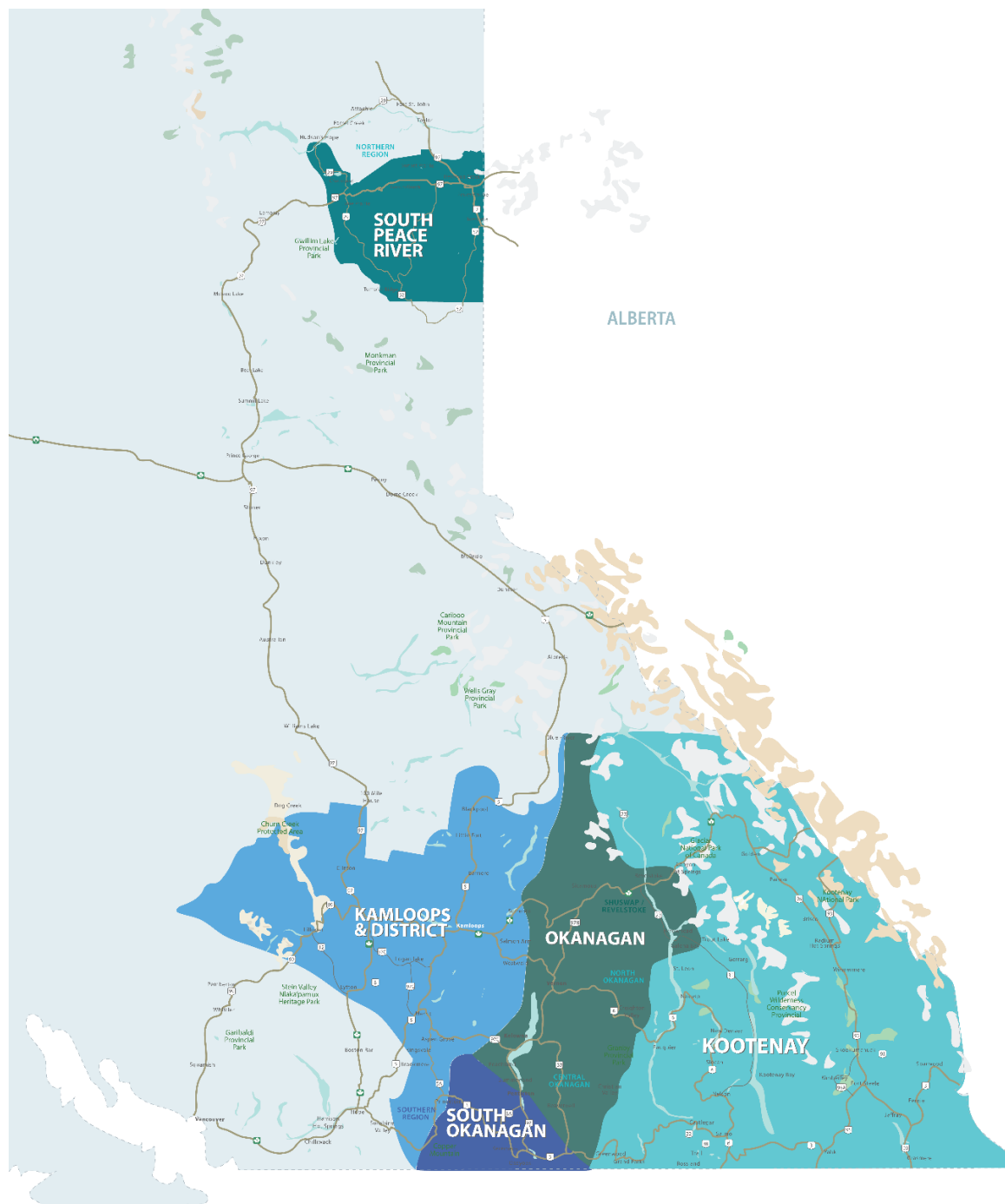


RESIDENTIAL SALES* MARCH 2022 SUMMARY STATISTICS

	 Units Sold	 Dollar Volume (Millions)	 Active Listings	 New Listings
CENTRAL OKANAGAN	641 ↓ -29.6%	\$619.7 ↓ -10.9%	1037 ↓ -10.3%	1147 ↑ 3.1%
NORTH OKANAGAN	242 ↓ -23.4%	\$179.7 ↓ -0.4%	354 ↓ -21.9%	334 ↓ -11.9%
SHUSWAP / REVELSTOKE	89 ↓ -35.0%	\$59.3 ↓ -19.4%	248 ↓ -0.4%	152 ↓ -5.0%
SOUTH OKANAGAN	213 ↓ -35.8%	\$135.9 ↓ -34.2%	448 ↓ -26.2%	211 ↓ -43.1%
SOUTH PEACE RIVER AREA	62 ↑ 19.2%	\$16.1 ↓ -5.9%	224 ↓ -24.8%	22 ↓ -74.1%
KAMLOOPS AND DISTRICT	326 ↓ -15.1%	\$215.6 ↑ 2.9%	943 ↑ 83.5%	510 ↑ 15.1%
KOOTENAY	325 ↓ -17.3%	\$170.2 ↑ 1.3%	764 ↓ -9.8%	495 ↓ -5.2%
TOTAL ASSOCIATION	1,898 ↓ -24.8%	\$1,396.5 ↓ -9.9%	4018 ↓ -2.6%	2871 ↓ -6.5%

*Residential = Acreage, Duplex, Mobile Home, Recreational, Single Family, 3/4Plex, Apartment & Townhouse. Excludes Land

**Percentage indicate change from the same period last year



This map is for informational purposes. It does not represent an on-the-ground survey and represents only the approximate relative location of property boundaries.



ASSOCIATION OF

INTERIOR REALTORS®

MARCH 2022
SUMMARY STATISTICSSINGLE
FAMILY

	CENTRAL OKANAGAN	NORTH OKANAGAN	SHUSWAP/ REVELSTOKE	SOUTH OKANAGAN
Sales	301 ↓ -26.8%	116 ↓ -27.5%	46 ↓ -22.0%	87 ↓ -41.6%
Benchmark Price*	\$1,129,000 ↑ 34.0%	\$779,700 ↑ 30.1%	\$700,900 ↑ 28.9%	\$731,400 ↑ 37.6%
Days to Sell	22 ↓ -34.4%	24 ↓ -54.0%	36 ↓ -42.9%	27 ↓ -53.6%
Inventory	473 ↑ 14.3%	169 ↓ -11.5%	116 ↑ 10.5%	198 ↓ -28.8%

	CENTRAL OKANAGAN	NORTH OKANAGAN	SHUSWAP/ REVELSTOKE	SOUTH OKANAGAN
Sales	83 ↓ -43.9%	51 ↓ -21.5%	6 ↓ -57.1%	21 ↓ -51.2%
Benchmark Price*	\$758,100 ↑ 28.5%	\$486,300 ↑ 22.3%	\$519,400 ↑ 23.5%	\$494,000 ↑ 22.2%
Days to Sell	29 ↓ -38.9%	21 ↓ -38.9%	77 ↓ -13.1%	18 ↓ -57.1%
Inventory	128 ↓ -15.8%	26 ↓ -46.9%	12 ↓ -7.7%	48 ↓ -4.0%

TOWN-
HOUSECONDO/
APARTMENT

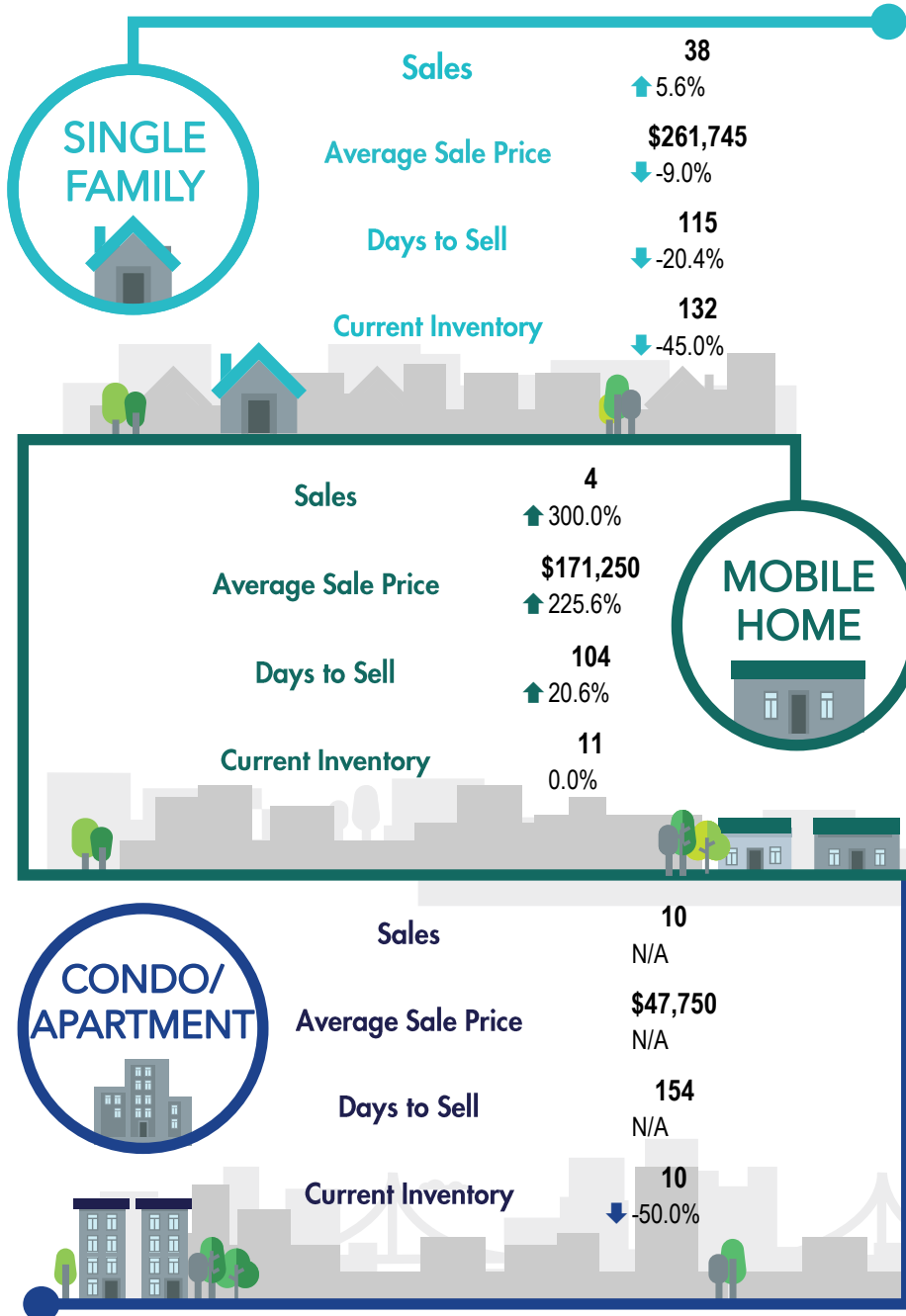
	CENTRAL OKANAGAN	NORTH OKANAGAN	SHUSWAP/ REVELSTOKE	SOUTH OKANAGAN
Sales	201 ↓ -24.7%	28 ↓ -22.2%	8 ↓ -68.0%	56 ↓ -33.3%
Benchmark Price*	\$557,400 ↑ 31.7%	\$353,100 ↑ 33.2%	\$451,200 ↑ 30.9%	\$404,400 ↑ 27.1%
Days to Sell	29 ↓ -31.7%	26 ↓ -63.0%	25 ↓ -69.8%	50 ↓ -53.8%
Inventory	245 ↓ -34.3%	42 ↓ -42.5%	36 ↑ 24.1%	80 ↓ -31.6%

*Benchmark Price: Estimated sales price of a benchmark property. Benchmarks represent a typical property within each market.

**Percentage indicate change from the same period last year



SOUTH PEACE RIVER REGION

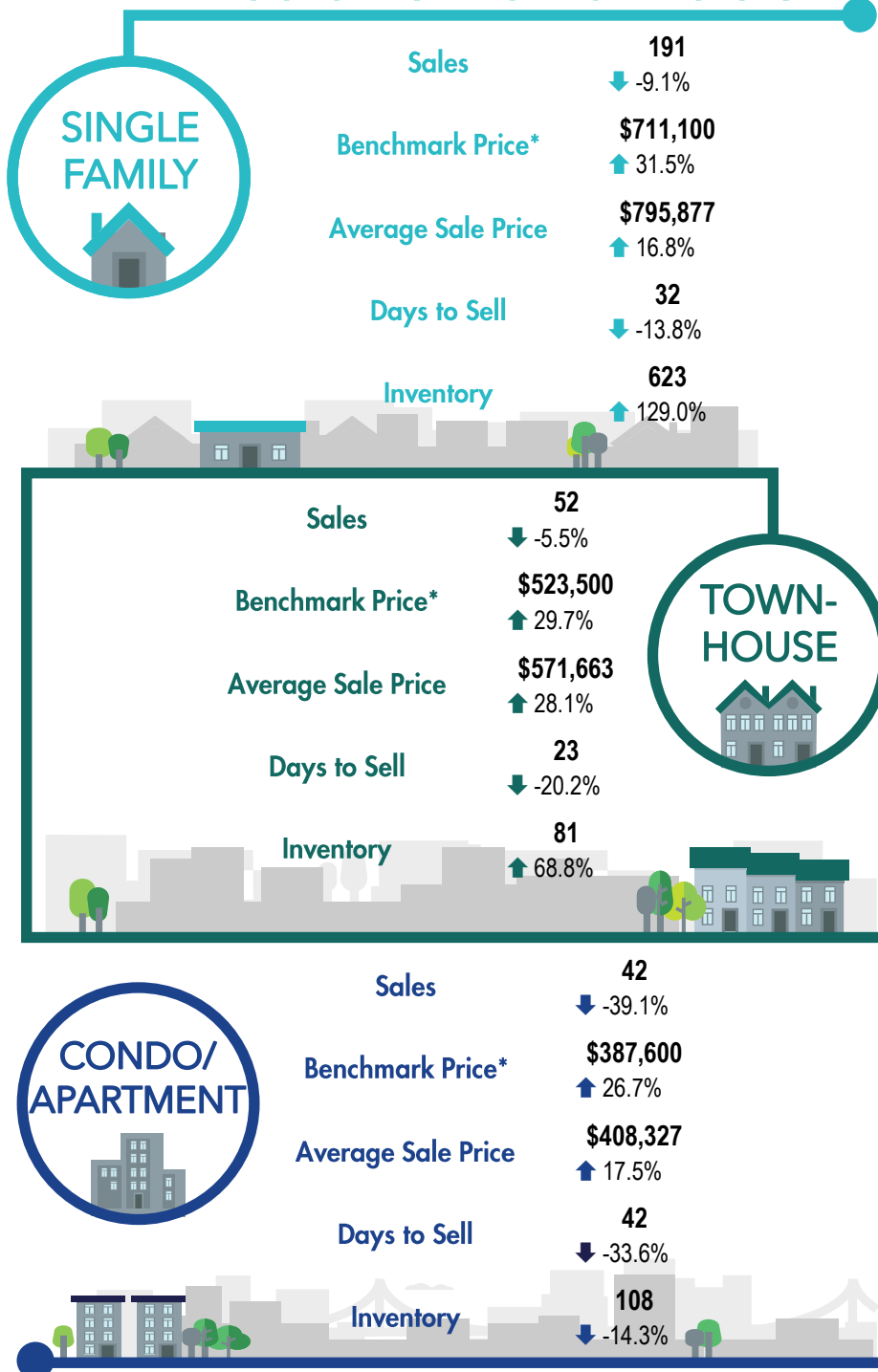


*The Association of Interior REALTORS® cautions that the average residential price is a useful figure only for establishing trends and comparisons over a period of time. It does not indicate an actual price for a home due to the wide selection of housing available over the vast geographic area.

**Percentage indicate change from the same period last year



KAMLOOPS AND DISTRICT REGION

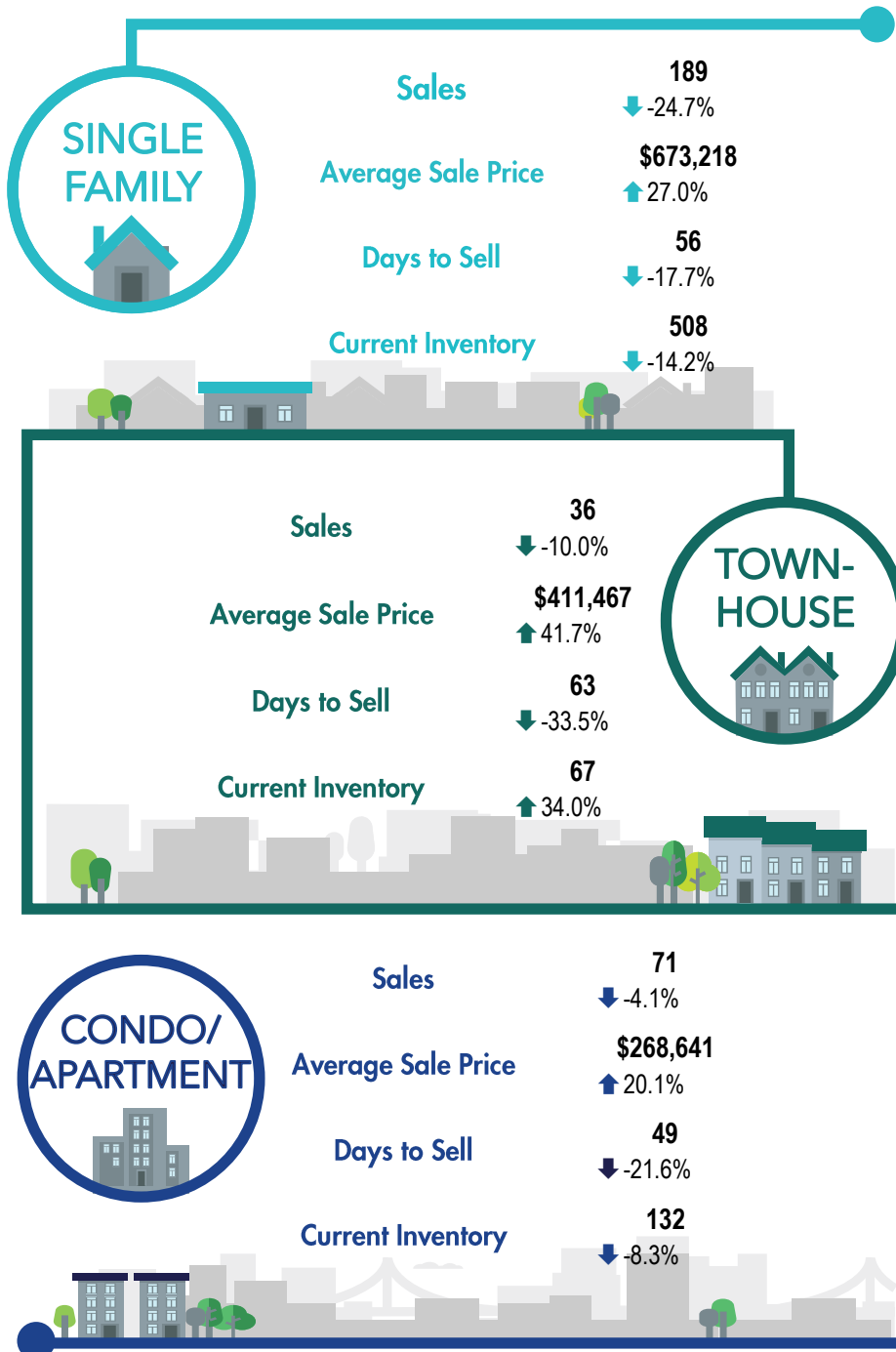


*Benchmark Price: Estimated sales price of a benchmark property. Benchmarks represent a typical property within each market.

**Percentage indicate change from the same period last year



KOOTENAY REGION



*The Association of Interior REALTORS® cautions that the average residential price is a useful figure only for establishing trends and comparisons over a period of time. It does not indicate an actual price for a home due to the wide selection of housing available over the vast geographic area.

*Percentage indicate change from the same period last year