







**RESIDENTIAL SALES\***  
**JUNE 2022**  
**SUMMARY STATISTICS**

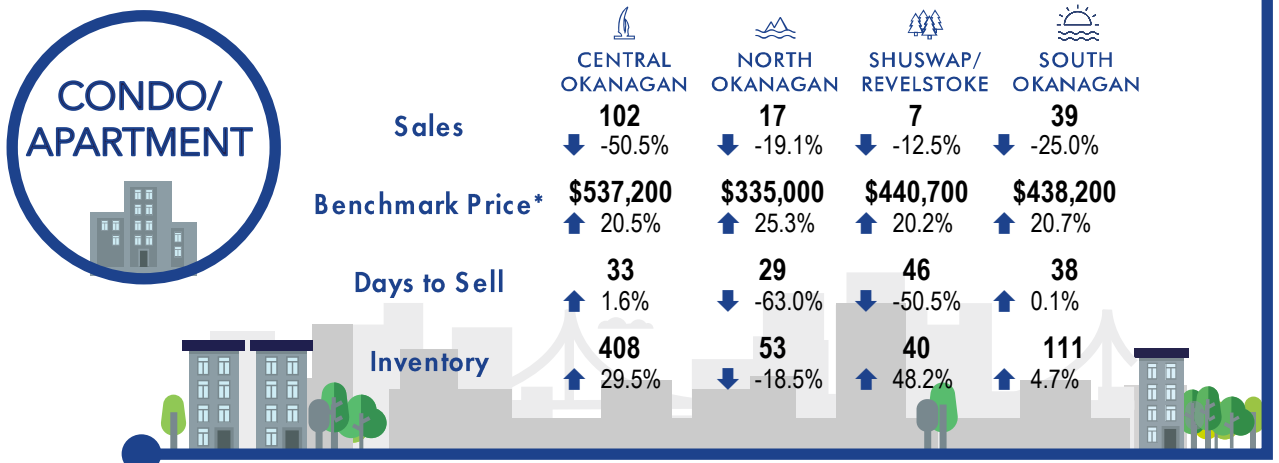
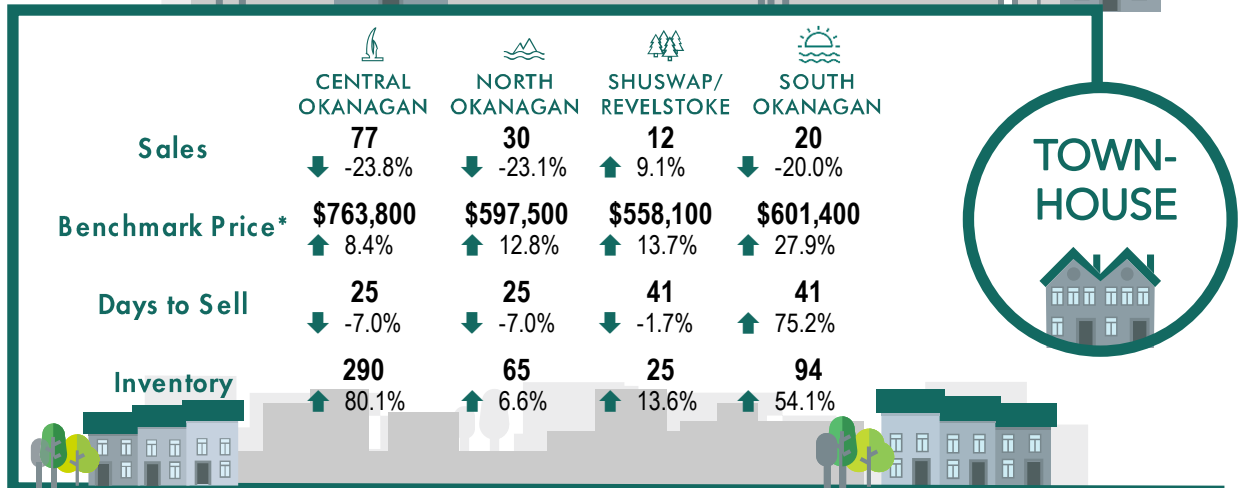
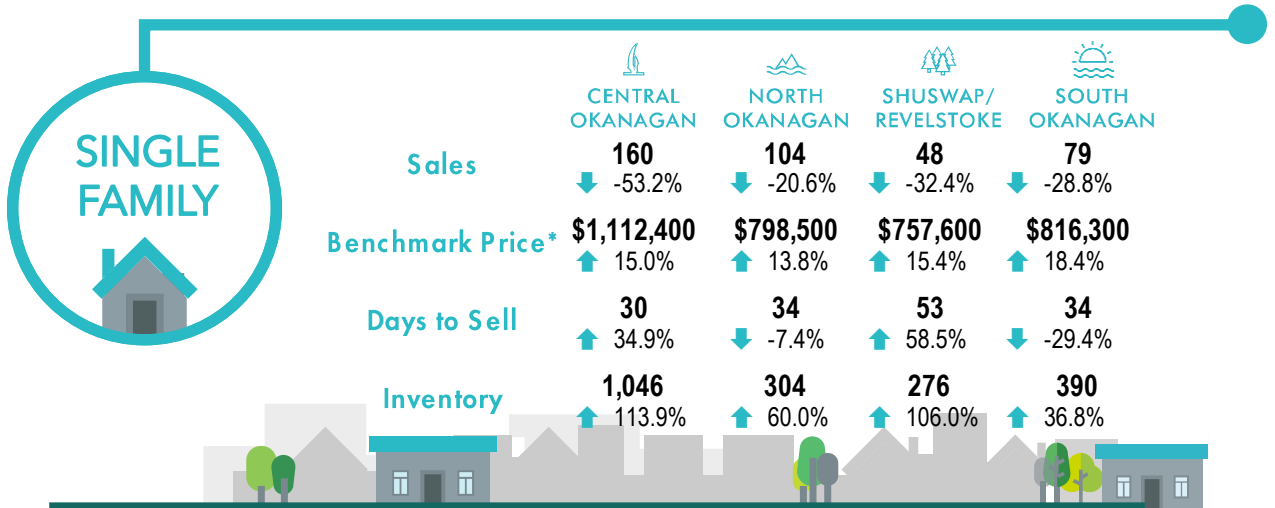
	 Units Sold	 Dollar Volume (Millions)	 Active Listings	 New Listings
<b>CENTRAL OKANAGAN</b>	389 ↓-47.3%	\$338.0 ↓-42.3%	2,032 ↑69.1%	1,240 ↑36.1%
<b>NORTH OKANAGAN</b>	184 ↓-23.3%	\$141.4 ↓-9.5%	624 ↑26.1%	356 ↑17.9%
<b>SHUSWAP / REVELSTOKE</b>	99 ↓-23.3%	\$68.9 ↓-11.2%	529 ↑64.8%	247 ↑38.0%
<b>SOUTH OKANAGAN</b>	174 ↓-24.7%	\$115.2 ↓-16.8%	802 ↑29.6%	233 ↓-32.1%
<b>SOUTH PEACE RIVER AREA</b>	66 ↑22.2%	\$17.5 ↑21.7%	238 ↓-34.8%	22 ↓-77.1%
<b>KAMLOOPS AND DISTRICT</b>	250 ↓-25.6%	\$166.7 ↓-11.0%	1,668 ↑101.2%	584 ↑15.2%
<b>KOOTENAY</b>	304 ↓-18.9%	\$154.6 ↓-7.9%	1,261 ↑14.8%	583 ↑12.1%
<b>TOTAL ASSOCIATION</b>	1,466 ↓-30.3%	\$1,002.3 ↓-24.5%	7,154 ↑45.1%	3,265 ↑14.2%

Residential = Acreage, Duplex, Mobile Home, Recreational, Single Family, 3/4Plex, Apartment & Townhouse. Excludes Land

\*\*Percentage indicate change from the same period last year



This map is for informational purposes. It does not represent an on-the-ground survey and represents only the approximate relative location of property boundaries.



\*Benchmark Price: Estimated sales price of a benchmark property. Benchmarks represent a typical property within each market.

\*\*Percentage indicate change from the same period last year