







ASSOCIATION OF

**INTERIOR REALTORS®**

## RESIDENTIAL SALES\*

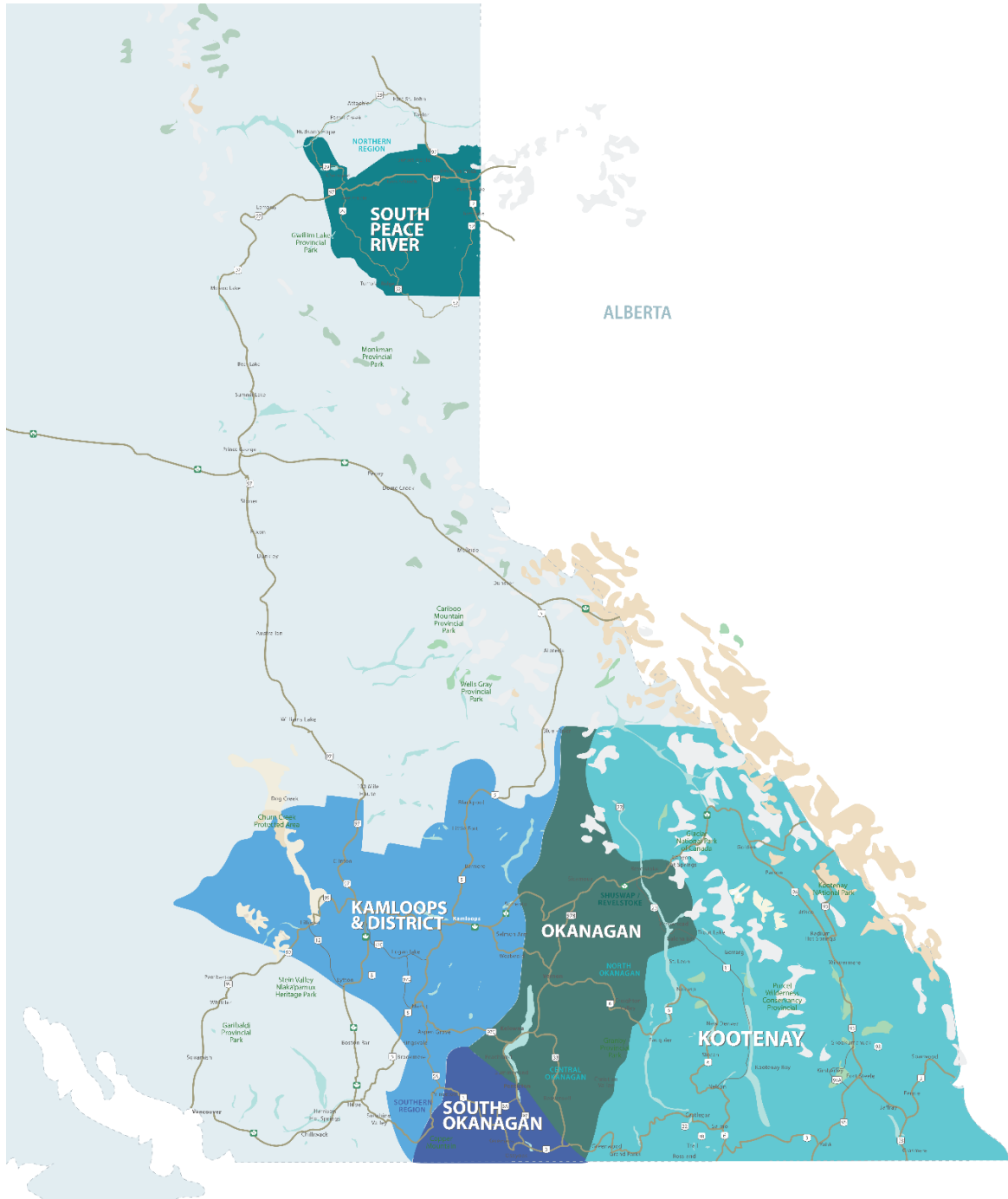
### JULY 2025

### SUMMARY STATISTICS

				
	Units Sold	Dollar Volume (Millions)	Active Listings	New Listings
CENTRAL OKANAGAN	440 ↑ 6.0%	\$356.7 ↑ 1.0%	3,507 ↑ 4.4%	1,048 ↑ 0.8%
NORTH OKANAGAN	171 ↑ 11.8%	\$120.2 ↑ 19.8%	1,130 ↑ 6.5%	309 ↑ 9.2%
SHUSWAP / REVELSTOKE	117 ↑ 34.5%	\$87.3 ↑ 21.4%	697 ↓ 5.9%	165 ↓ 11.3%
SOUTH OKANAGAN	193 ↑ 6.0%	\$123.0 ↑ 0.3%	1,601 ↑ 4.6%	364 ↓ 1.9%
SOUTH PEACE RIVER AREA	42 ↓ 4.5%	\$13.5 ↓ 1.5%	209 ↓ 23.2%	61 ↓ 26.5%
KAMLOOPS AND DISTRICT	259 ↑ 9.3%	\$162.9 ↑ 12.2%	1,506 ↑ 5.8%	511 ↑ 13.8%
KOOTENAY	312 ↑ 11.0%	\$183.0 ↑ 15.1%	1,793 ↓ 1.4%	462 ↓ 4.7%
<b>TOTAL ASSOCIATION</b>	<b>1,534</b> ↑ 9.6%	<b>\$1,046.7</b> ↑ 8.3%	<b>10,443</b> ↑ 2.3%	<b>2,920</b> ↑ 0.8%

\*Residential = Acreage, Duplex, Mobile Home, Recreational, SINGLE-FAMILY\*, 3/4Plex, Apartment & Townhouse. Excludes Land

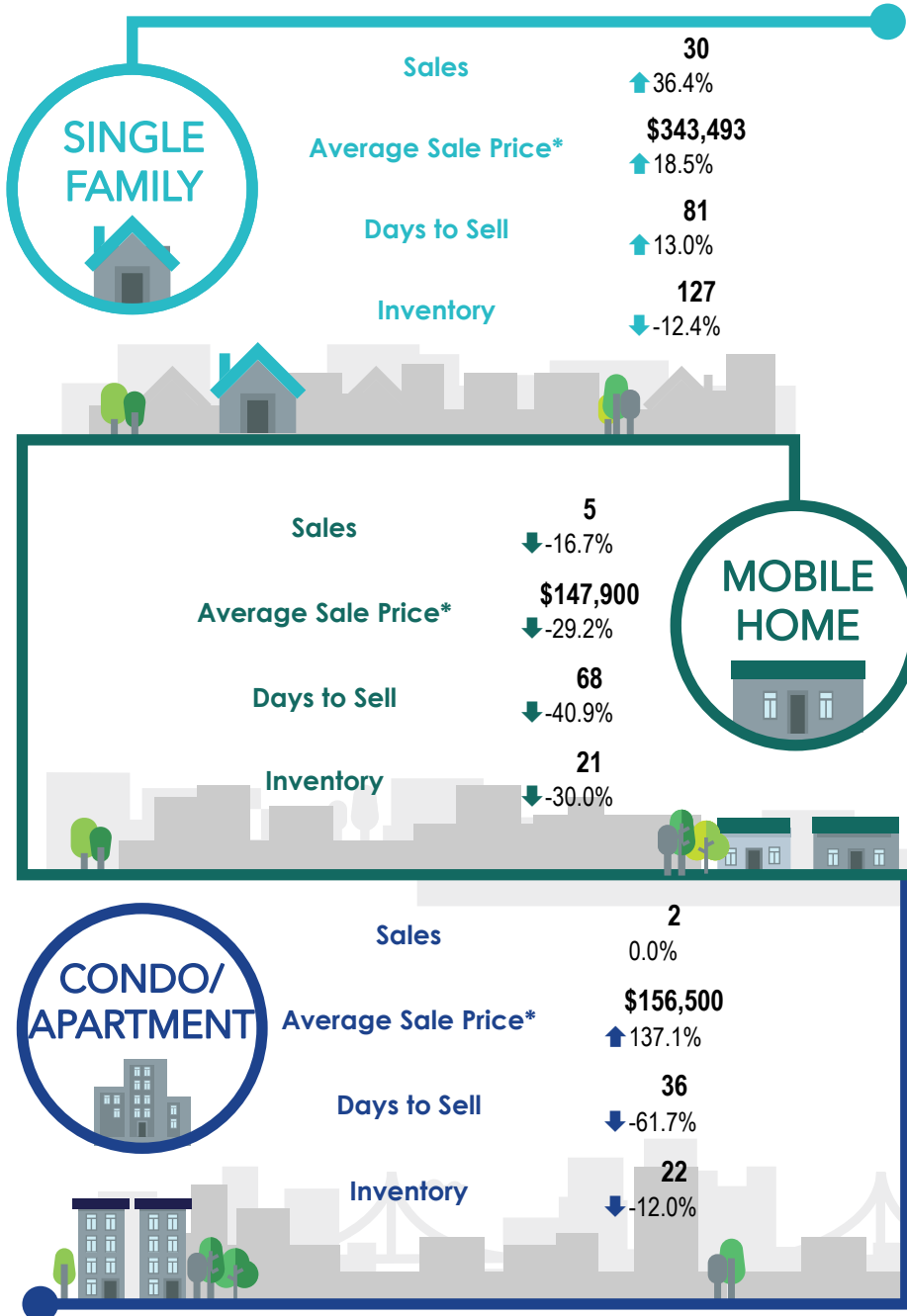
\*\*Percentage indicates change from the same period last year



This map is for informational purposes. It does not represent an on-the-ground survey and represents only the approximate relative location of property boundaries.



## SOUTH PEACE RIVER REGION



\*The Association of Interior REALTORS® cautions that the average residential price is a useful figure only for establishing trends and comparisons over a period of time. It does not indicate an actual price for a home due to the wide selection of housing available over the vast geographic area.

\*\*Percentages indicate changes from the same period last year.