



ASSOCIATION OF

INTERIOR REALTORS®

RESIDENTIAL SALES*

DECEMBER 2025

SUMMARY STATISTICS

Units
SoldDollar
Volume
(Millions)Active
ListingsNew
Listings

CENTRAL OKANAGAN

240
↓-4.0%\$210.8
↑3.7%2,333
↑2.2%365
↑9.3%

NORTH OKANAGAN

98
↑19.5%\$74.8
↑26.8%695
↑11.0%114
↑12.9%

SHUSWAP / REVELSTOKE

40
↑48.1%\$32.2
↑78.6%437
↓-0.5%65
↑38.3%

SOUTH OKANAGAN

98
↑18.1%\$54.9
↑19.1%947
↓-9.4%123
↑4.2%

SOUTH PEACE RIVER AREA

22
↑22.2%\$6.3
↑26.5%161
↓-7.5%11
↓-31.3%

KAMLOOPS AND DISTRICT

137
↑3.8%\$84.5
↑12.5%924
↑1.2%165
↑9.3%

KOOTENAY

153
↑25.4%\$81.9
↑27.1%1,189
↓-4.3%174
↑8.1%

TOTAL ASSOCIATION

788
↑10.4%\$545.3
↑15.8%6,686
↓-0.5%1,017
↑9.6%

Residential = Acreage, Duplex, Mobile Home, Recreational, SINGLE-FAMILY, 3/4Plex, Apartment & Townhouse. Excludes Land

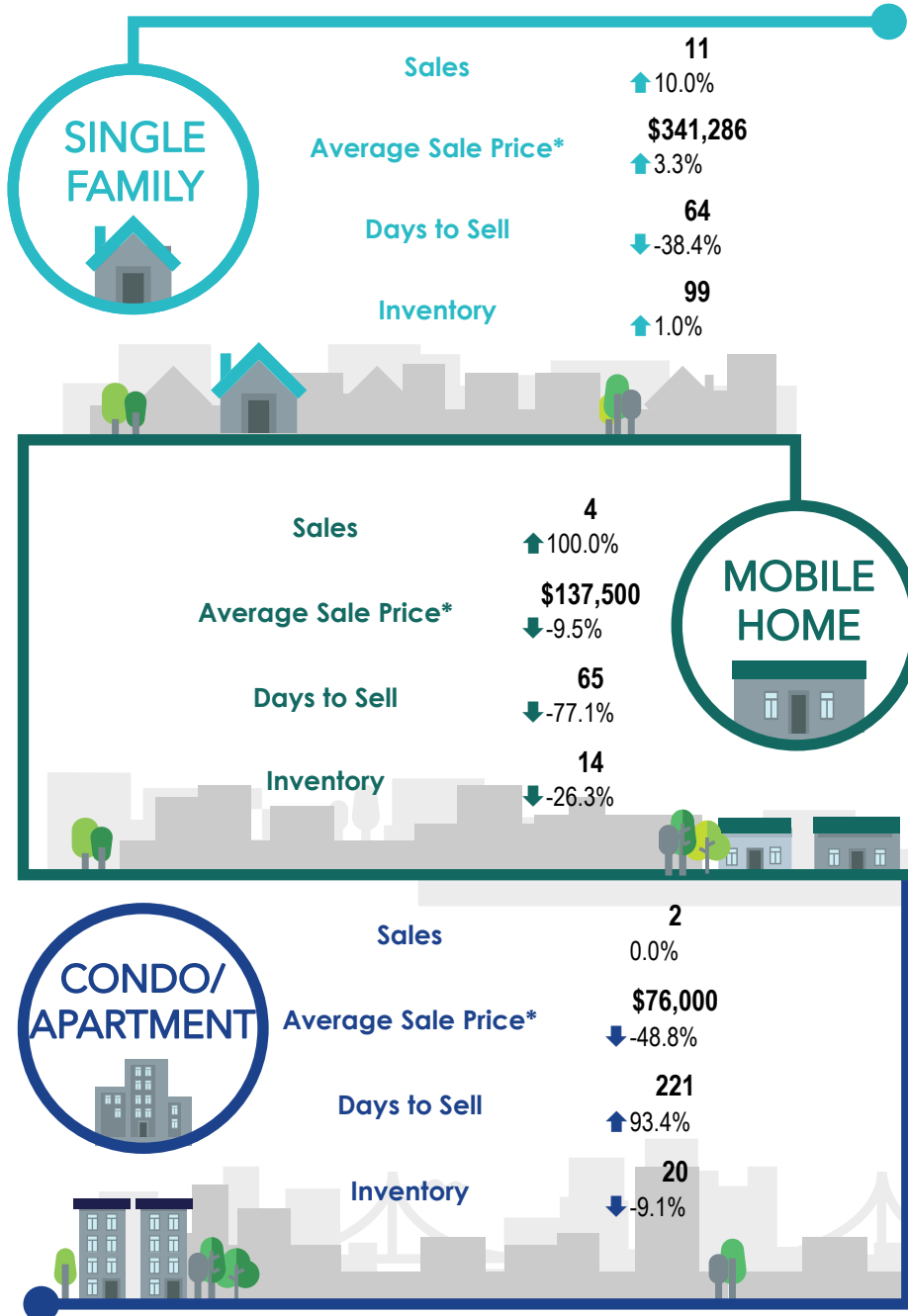
**Percentage indicates change from the same period last year



This map is for informational purposes. It does not represent an on-the-ground survey and represents only the approximate relative location of property boundaries.



SOUTH PEACE RIVER REGION



*The Association of Interior REALTORS® cautions that the average residential price is a useful figure only for establishing trends and comparisons over a period of time. It does not indicate an actual price for a home due to the wide selection of housing available over the vast geographic area.

**Percentages indicate changes from the same period last year.