







ASSOCIATION OF

INTERIOR REALTORS®

RESIDENTIAL SALES*

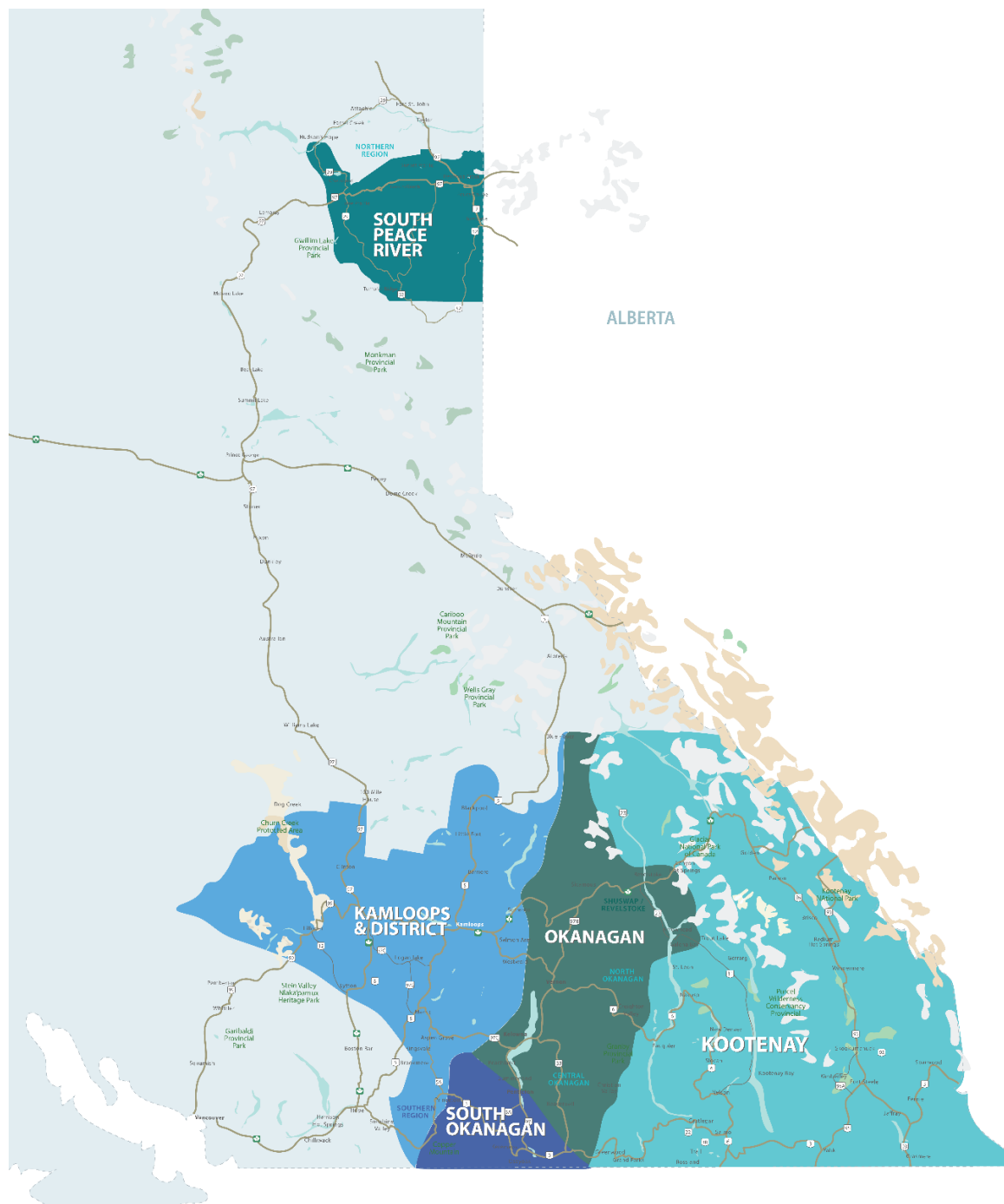
DECEMBER 2022

SUMMARY STATISTICS

				
	Units Sold	Dollar Volume (Millions)	Active Listings	New Listings
CENTRAL OKANAGAN	184 ↓-49.3%	\$154.7 ↓-44.7%	1,490 ↑118.5%	258 ↓-20.1%
NORTH OKANAGAN	63 ↓-50.4%	\$34.7 ↓-60.7%	476 ↑71.2%	72 ↓-26.5%
SHUSWAP / REVELSTOKE	48 ↓-9.4%	\$27.2 ↓-31.1%	306 ↑59.4%	38 ↓-30.9%
SOUTH OKANAGAN	81 ↓-6.9%	\$51.5 ↓-7.5%	652 ↑92.3%	61 ↑22.0%
SOUTH PEACE RIVER AREA	24 ↑9.1%	\$6.5 ↓-7.4%	210 ↓-13.2%	5 ↑25.0%
KAMLOOPS AND DISTRICT	75 ↓-54.8%	\$42.0 ↓-61.1%	1,911 ↑172.2%	109 ↓-3.5%
KOOTENAY	97 ↓-46.7%	\$43.3 ↓-53.2%	956 ↑43.5%	146 ↓-18.0%
TOTAL ASSOCIATION	572 ↓-42.8%	\$359.9 ↓-46.4%	6,001 ↑93.5%	651 ↓-20.7%

Residential = Acreage, Duplex, Mobile Home, Recreational, Single Family, 3/4Plex, Apartment & Townhouse. Excludes Land

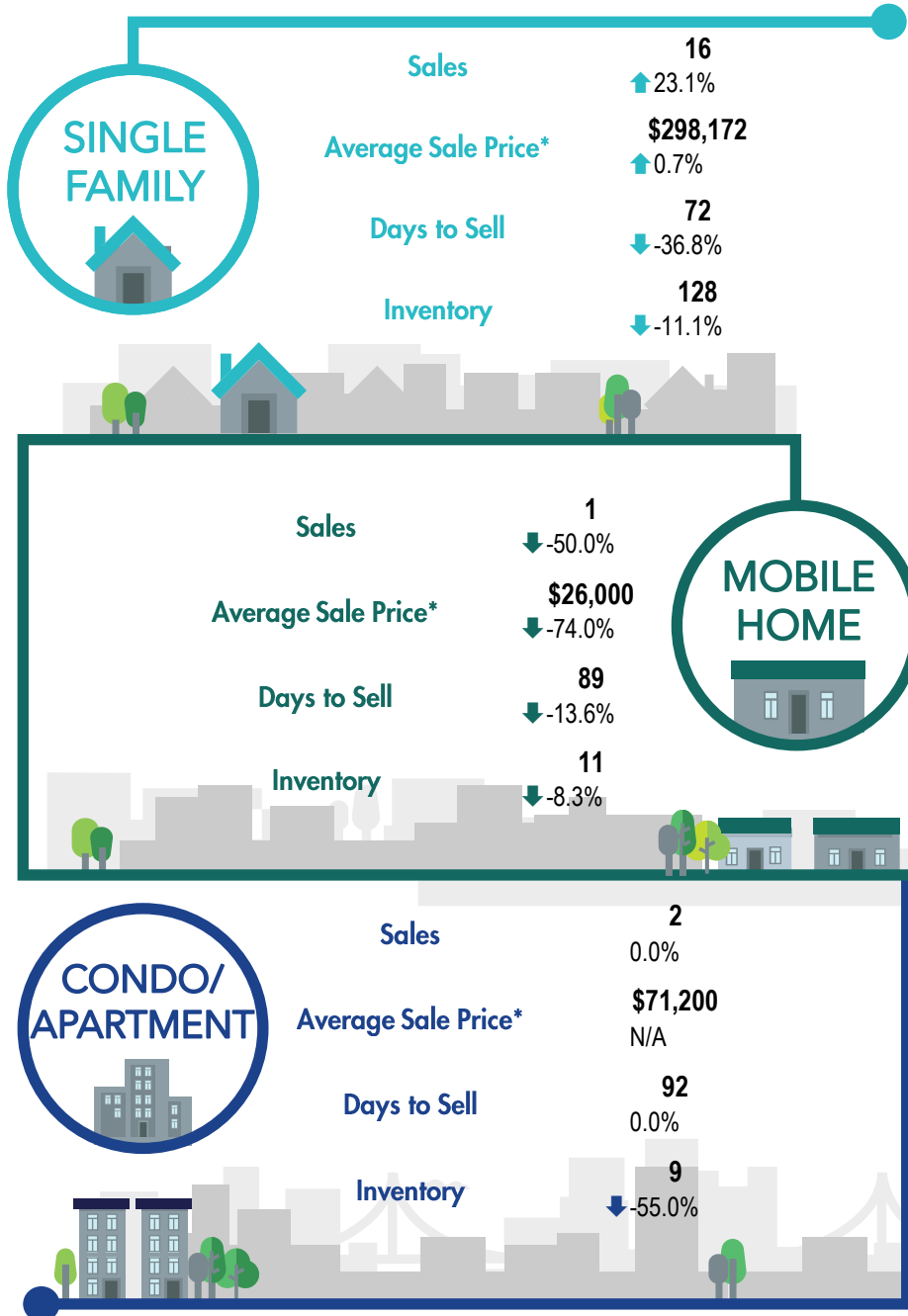
**Percentage indicate change from the same period last year



This map is for informational purposes. It does not represent an on-the-ground survey and represents only the approximate relative location of property boundaries.



SOUTH PEACE RIVER REGION



*The Association of Interior REALTORS® cautions that the average residential price is a useful figure only for establishing trends and comparisons over a period of time. It does not indicate an actual price for a home due to the wide selection of housing available over the vast geographic area.

**Percentage indicate change from the same period last year