





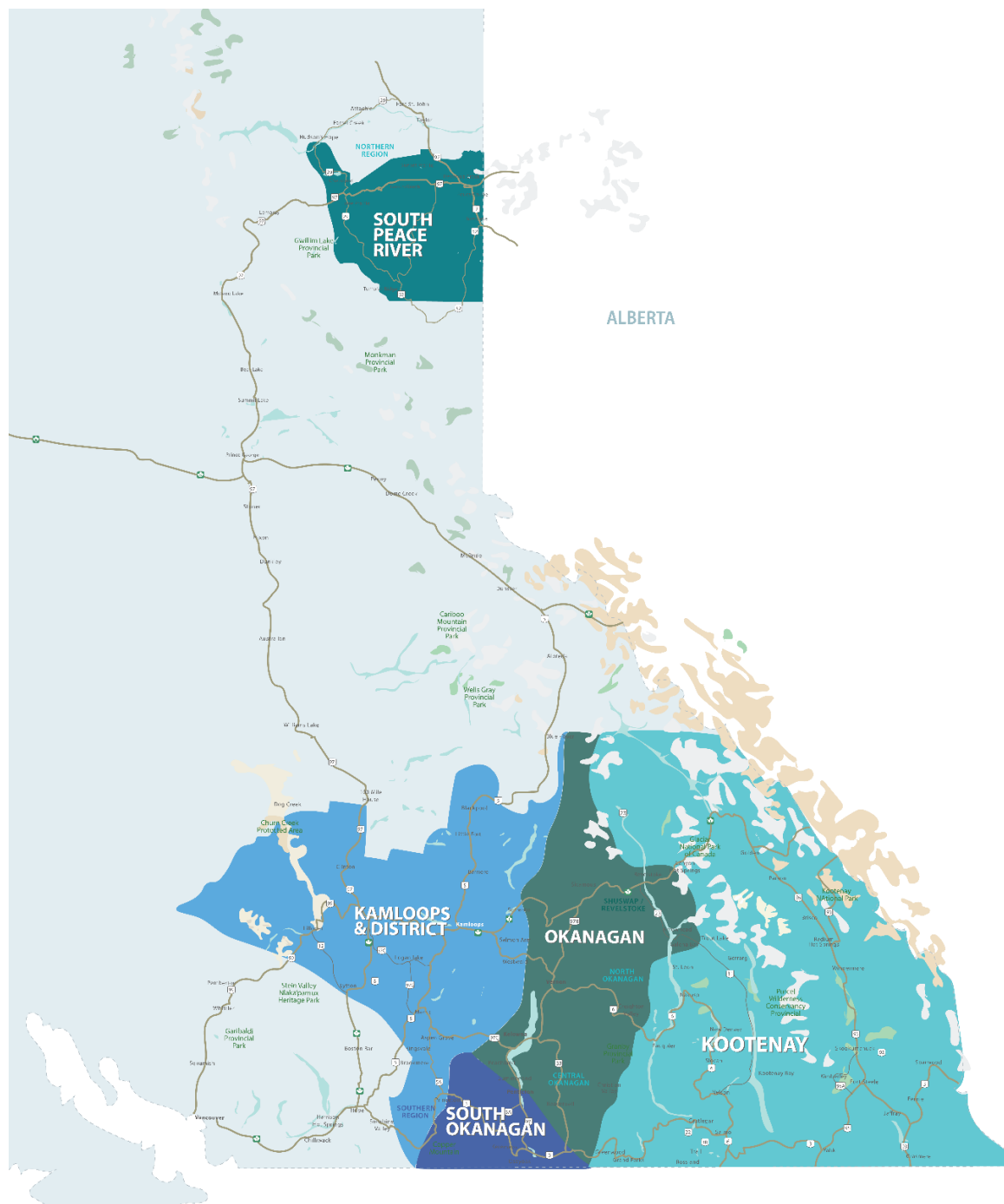


RESIDENTIAL SALES* AUGUST 2022 SUMMARY STATISTICS

| |  |  |  |  |
|--------------------------|---|---|--|---|
| | Units Sold | Dollar Volume (Millions) | Active Listings | New Listings |
| CENTRAL OKANAGAN | 394 ↓ -26.2% | \$331.3 ↓ -21.0% | 2,195 ↑ 94.1% | 865 ↑ 21.5% |
| NORTH OKANAGAN | 142 ↓ -34.0% | \$98.3 ↓ -23.9% | 706 ↑ 49.9% | 270 ↑ 26.8% |
| SHUSWAP / REVELSTOKE | 86 ↓ -23.9% | \$61.2 ↓ -12.1% | 574 ↑ 88.2% | 136 ↑ 9.7% |
| SOUTH OKANAGAN | 135 ↓ -36.6% | \$93.0 ↓ -33.8% | 824 ↑ 31.0% | 186 ↓ -37.4% |
| SOUTH PEACE RIVER AREA | 45 ↓ -36.6% | \$12.5 ↓ -45.9% | 258 ↓ -26.5% | 22 ↓ -72.2% |
| KAMLOOPS AND DISTRICT | 165 ↓ -42.5% | \$125.6 ↓ -18.1% | 1,958 ↑ 126.9% | 391 ↑ 3.2% |
| KOOTENAY | 238 ↓ -33.0% | \$96.2 ↓ -41.7% | 1,361 ↑ 19.2% | 418 ↓ -5.6% |
| TOTAL ASSOCIATION | 1,205 ↓ -32.6% | \$818.2 ↓ -25.6% | 7,876 ↑ 61.0% | 2,152 ↓ -4.2% |

*Residential = Acreage, Duplex, Mobile Home, Recreational, Single Family, 3/4Plex, Apartment & Townhouse. Excludes Land

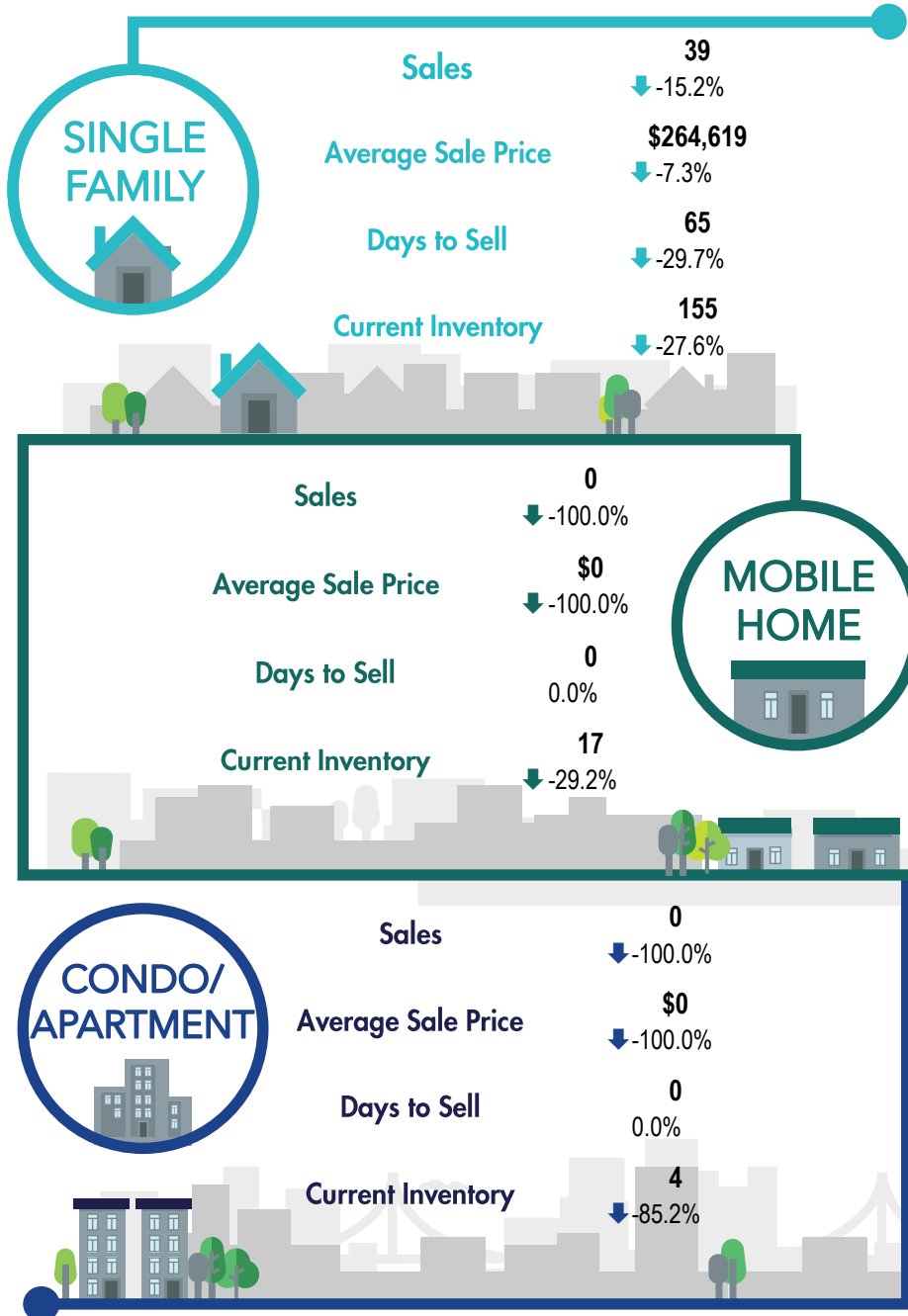
**Percentage indicate change from the same period last year



This map is for informational purposes. It does not represent an on-the-ground survey and represents only the approximate relative location of property boundaries.



SOUTH PEACE RIVER REGION



*The Association of Interior REALTORS® cautions that the average residential price is a useful figure only for establishing trends and comparisons over a period of time. It does not indicate an actual price for a home due to the wide selection of housing available over the vast geographic area.

**Percentage indicate change from the same period last year