



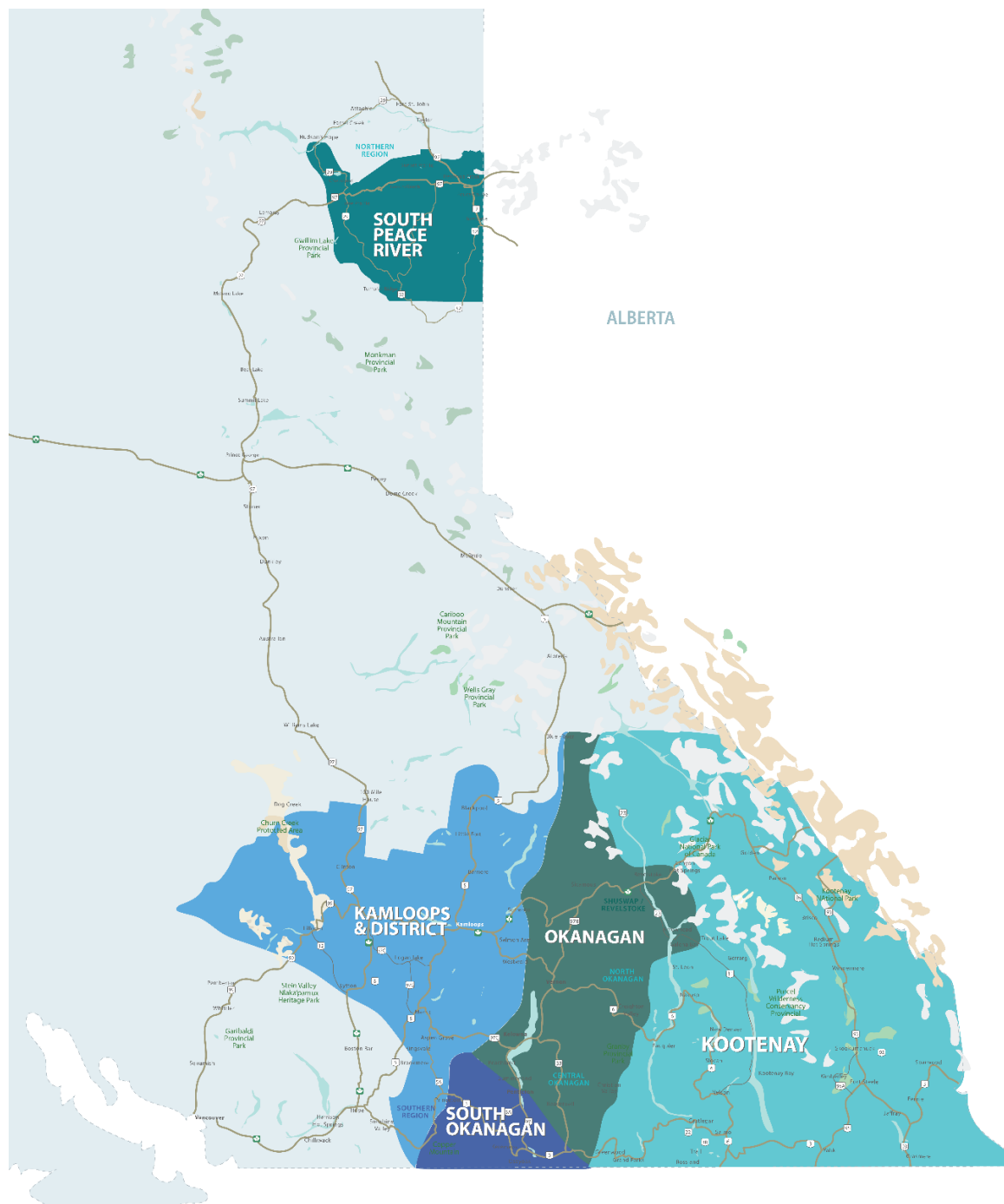


RESIDENTIAL SALES*
APRIL 2022
SUMMARY STATISTICS

				
	Units Sold	Dollar Volume (Millions)	Active Listings	New Listings
CENTRAL OKANAGAN	577 ↓ -33.8%	\$536.7 ↓ -19.6%	1,334 ↑ 12.4%	1,153 ↑ 7.6%
NORTH OKANAGAN	220 ↓ -32.3%	\$164.2 ↓ -21.9%	434 ↓ -6.7%	354 ↓ -9.0%
SHUSWAP / REVELSTOKE	105 ↓ -20.5%	\$77.1 ↓ -0.7%	319 ↑ 13.1%	202 ↑ 9.2%
SOUTH OKANAGAN	201 ↓ -33.0%	\$144.2 ↓ -20.1%	555 ↓ -11.2%	233 ↓ -39.0%
SOUTH PEACE RIVER AREA	52 0.0%	\$14.0 ↓ -12.1%	217 ↓ -28.9%	17 ↓ -79.0%
KAMLOOPS AND DISTRICT	246 ↓ -39.3%	\$164.4 ↓ -26.3%	1,179 ↑ 96.2%	528 ↑ 0.6%
KOOTENAY	307 ↓ -27.4%	\$160.8 ↓ -14.4%	900 ↑ 2.3%	503 ↓ -6.0%
TOTAL ASSOCIATION	1,708 ↓ -31.9%	\$1,261.4 ↓ -19.3%	4,938 ↑ 13.6%	2,990 ↓ -5.6%

*Residential = Acreage, Duplex, Mobile Home, Recreational, Single Family, 3/4Plex, Apartment & Townhouse. Excludes Land

**Percentage indicate change from the same period last year



This map is for informational purposes. It does not represent an on-the-ground survey and represents only the approximate relative location of property boundaries.



ASSOCIATION OF

INTERIOR REALTORS®

APRIL 2022
SUMMARY STATISTICSSINGLE
FAMILY

	CENTRAL OKANAGAN	NORTH OKANAGAN	SHUSWAP/ REVELSTOKE	SOUTH OKANAGAN
Sales	245 ↓ -38.4%	111 ↓ -37.3%	52 ↓ -14.8%	100 ↓ -24.2%
Benchmark Price*	\$1,131,800 ↑ 26.9%	\$788,600 ↑ 26.2%	\$712,300 ↑ 26.6%	\$771,000 ↑ 26.5%
Days to Sell	22 ↓ -4.2%	24 ↓ -15.5%	44 ↓ -0.6%	30 ↓ -30.5%
Inventory	670 ↑ 48.9%	227 ↑ 15.8%	154 ↑ 17.6%	255 ↓ -19.3%

	CENTRAL OKANAGAN	NORTH OKANAGAN	SHUSWAP/ REVELSTOKE	SOUTH OKANAGAN
Sales	95 ↓ -25.2%	29 ↓ -45.3%	6 ↓ -33.3%	27 ↓ -37.2%
Benchmark Price*	\$754,200 ↑ 21.4%	\$514,900 ↑ 25.3%	\$551,100 ↑ 26.6%	\$525,000 ↑ 27.4%
Days to Sell	19 ↓ -54.0%	16 ↓ -54.0%	19 ↓ -62.8%	30 ↓ -33.5%
Inventory	178 ↑ 20.3%	38 ↓ -22.5%	15 ↓ -44.4%	62 ↑ 19.2%

TOWN-
HOUSECONDO/
APARTMENT

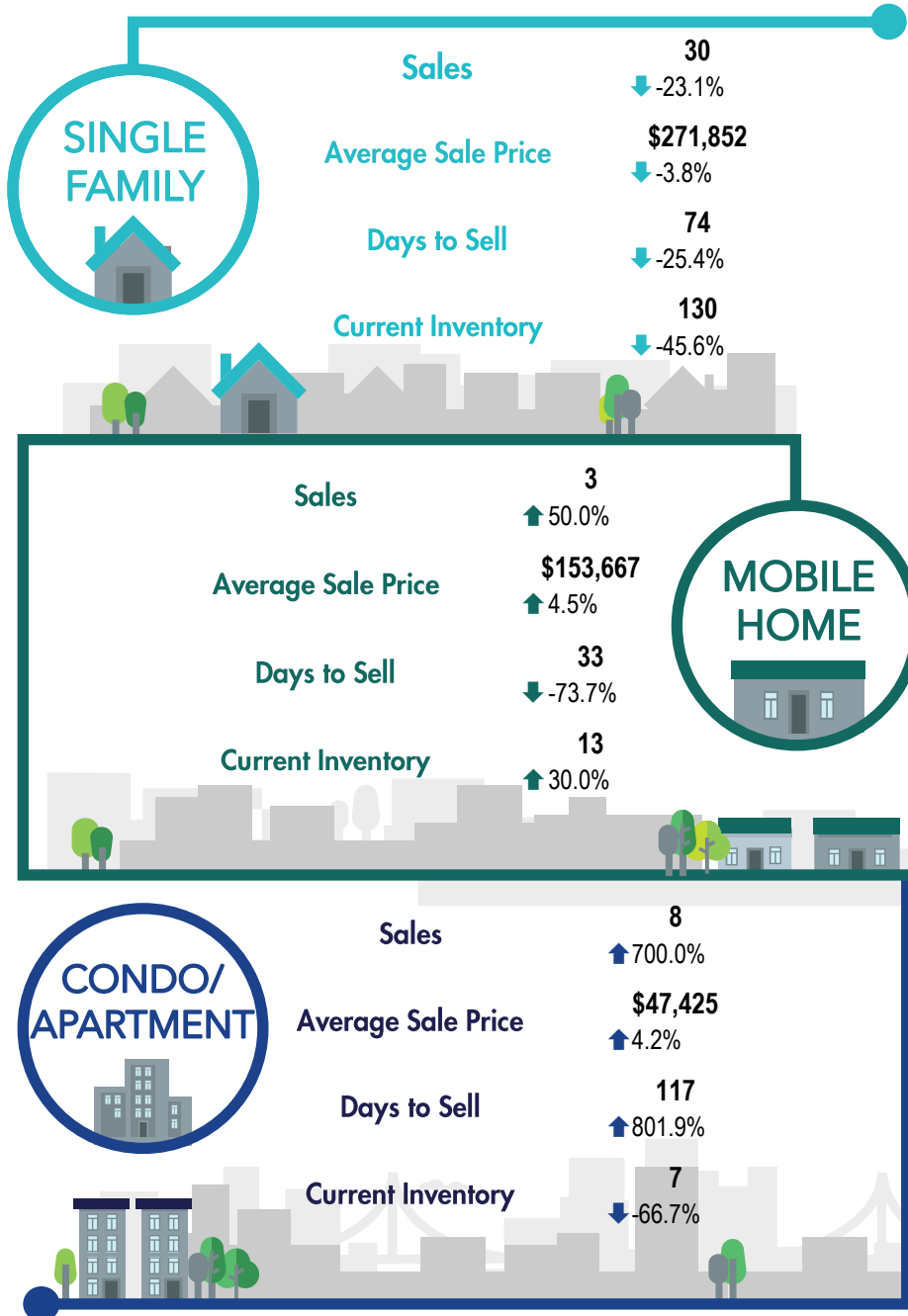
	CENTRAL OKANAGAN	NORTH OKANAGAN	SHUSWAP/ REVELSTOKE	SOUTH OKANAGAN
Sales	168 ↓ -32.5%	32 0.0%	12 ↑ 20.0%	32 ↓ -57.3%
Benchmark Price*	\$557,400 ↑ 28.5%	\$353,400 ↑ 29.8%	\$448,500 ↑ 26.9%	\$409,800 ↑ 25.9%
Days to Sell	27 ↓ -29.4%	34 ↓ -49.0%	31 ↓ -62.6%	30 ↓ -75.3%
Inventory	281 ↓ -23.0%	34 ↓ -51.4%	41 ↑ 46.4%	90 ↓ -11.8%

*Benchmark Price: Estimated sales price of a benchmark property. Benchmarks represent a typical property within each market.

**Percentage indicate change from the same period last year



SOUTH PEACE RIVER REGION

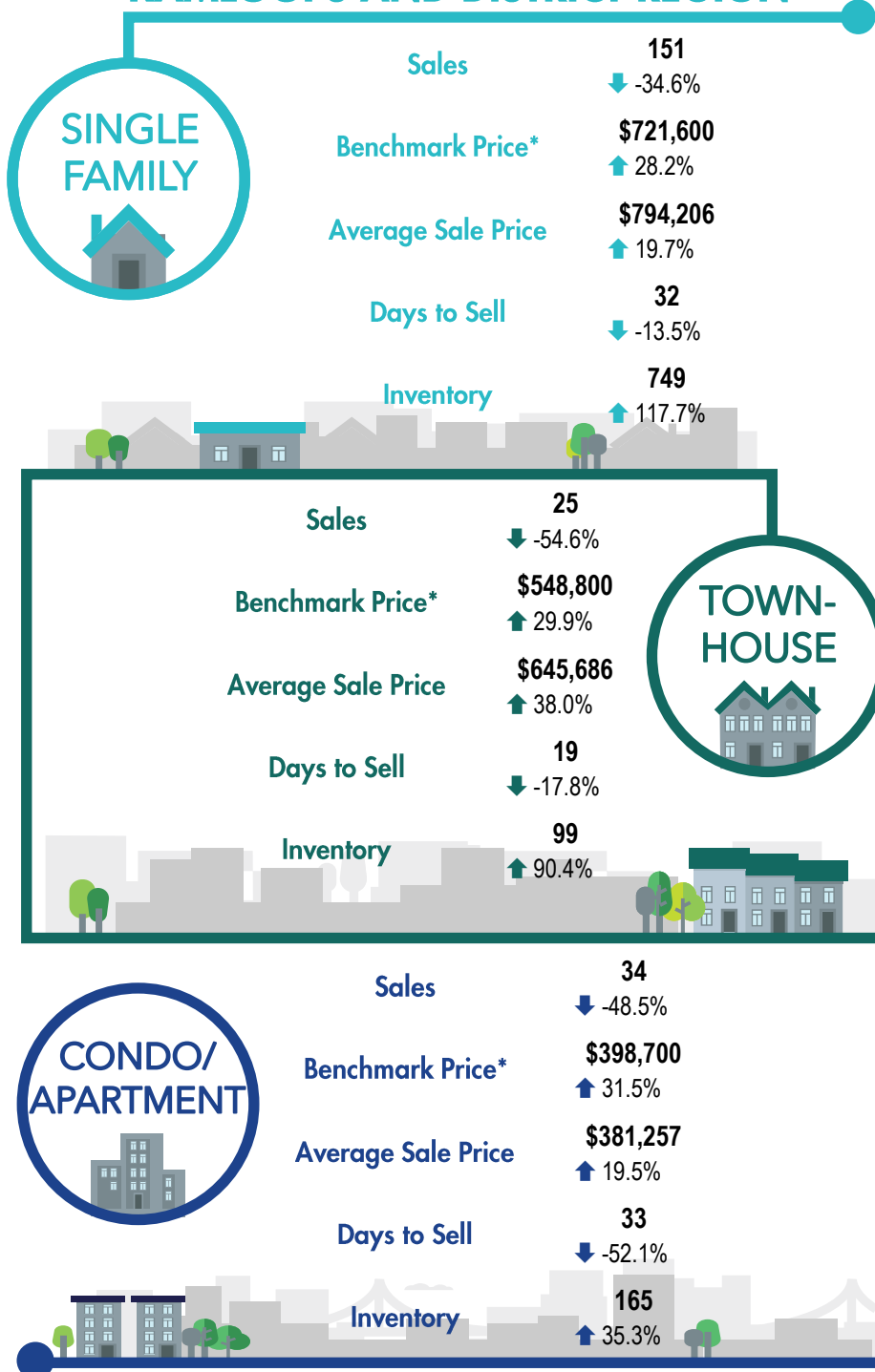


*The Association of Interior REALTORS® cautions that the average residential price is a useful figure only for establishing trends and comparisons over a period of time. It does not indicate an actual price for a home due to the wide selection of housing available over the vast geographic area.

**Percentage indicate change from the same period last year



KAMLOOPS AND DISTRICT REGION

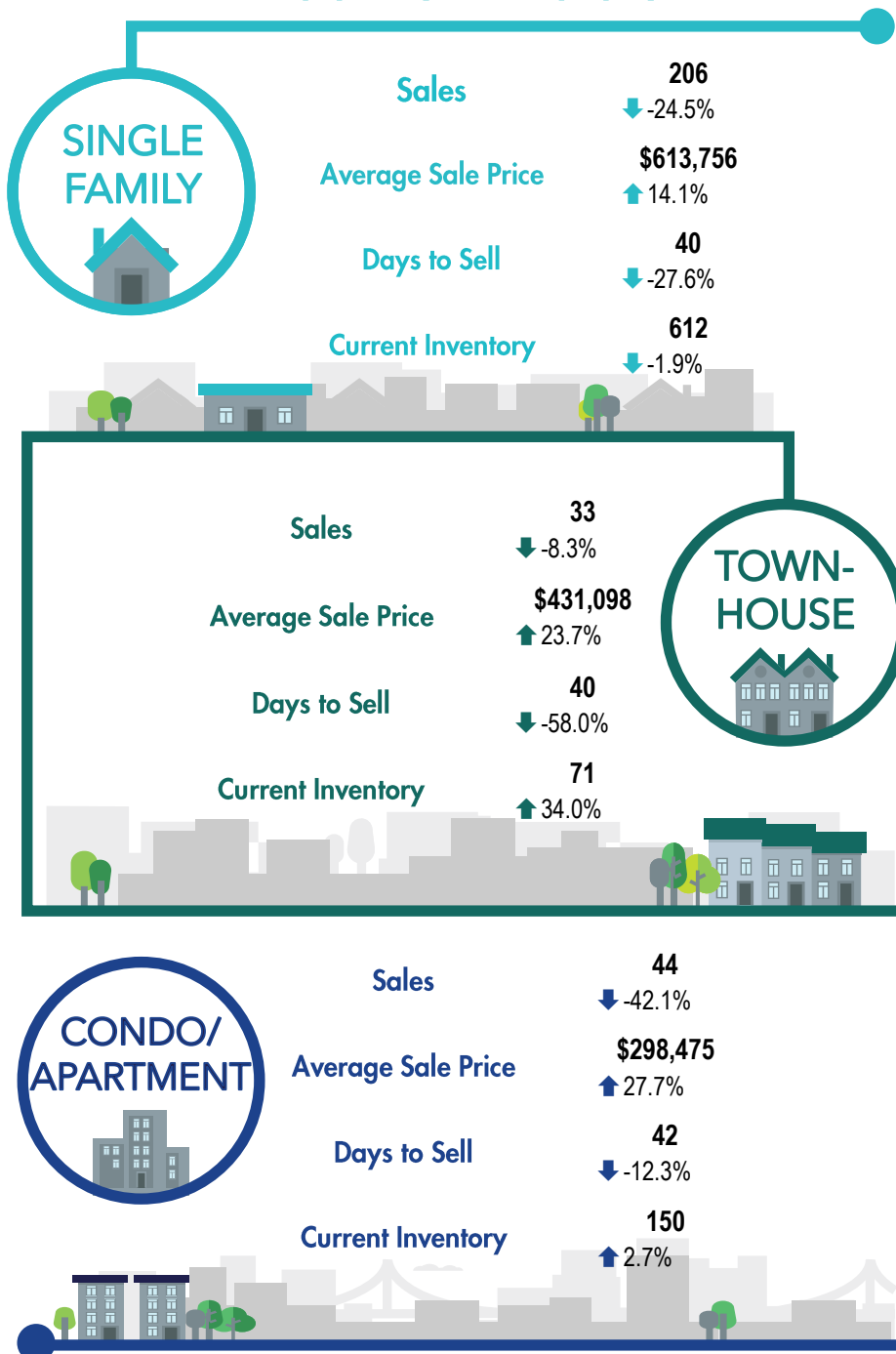


*Benchmark Price: Estimated sales price of a benchmark property. Benchmarks represent a typical property within each market.

**Percentage indicate change from the same period last year



KOOTENAY REGION



*The Association of Interior REALTORS® cautions that the average residential price is a useful figure only for establishing trends and comparisons over a period of time. It does not indicate an actual price for a home due to the wide selection of housing available over the vast geographic area.

*Percentage indicate change from the same period last year